



[Go to Product page](#)

Datasheet for ABIN1348339

CCDC88B Protein (AA 1-223) (GST tag)

1 Image

Overview

| | |
|-------------------------------|---|
| Quantity: | 25 µg |
| Target: | CCDC88B |
| Protein Characteristics: | AA 1-223 |
| Origin: | Human |
| Source: | Wheat germ |
| Protein Type: | Recombinant |
| Purification tag / Conjugate: | This CCDC88B protein is labelled with GST tag. |
| Application: | ELISA, Western Blotting (WB), Antibody Array (AA), Affinity Purification (AP) |

Product Details

| | |
|------------------|--|
| Purpose: | CCDC88B (Human) Recombinant Protein (P01) |
| Sequence: | MRPWQAGSGG NSAQGSRWGE ALSHSALGTP LGNDSDSAQ APWGRPSPTA KDLVWDGRTPLRPCRNTKQM PTERALRYRN RRNVSPHPS ASDTVGTAGL GVQPSRHWSV SGGPRQPKSSGSQGPQGESL DKEAWALRSS TVSAGARRWS WDECVDRGDG WPPRAAPGWS SGSSRWLPLRQRSLGDPPAE GGWQELAREP PALSRWEAES QCWGTVAWAD LEP |
| Characteristics: | Human CCDC88B full-length ORF (AAH30194.1, 1 a.a. - 223 a.a.) recombinant protein with GST-tag at N-terminal. |
| Purification: | in vitro wheat germ expression system |

Target Details

| | |
|---------|---------|
| Target: | CCDC88B |
|---------|---------|

Target Details

| | |
|-------------------|--|
| Alternative Name: | CCDC88B (CCDC88B Products) |
| Background: | Full Gene Name: coiled-coil domain containing 88B Synonyms: BRLZ,CCDC88,DKFZp434G0920,FLJ00354,FLJ37970,HkRP3 |
| Gene ID: | 283234 |

Application Details

| | |
|--------------------|--|
| Application Notes: | Optimal working dilution should be determined by the investigator. |
| Comment: | Preparation method: in vitro, wheat germ expression system Product Quality tested by: 12.5% SDS-PAGE Stained with Coomassie Blue. |
| Restrictions: | For Research Use only |

Handling

| | |
|------------------|---|
| Buffer: | 50 mM Tris-HCl, 10 mM reduced Glutathione, pH =8.0 in the elution buffer. |
| Handling Advice: | Aliquot to avoid repeated freezing and thawing. |
| Storage: | -80 °C |
| Storage Comment: | Best use within three months from the date of receipt of this protein. |

Images

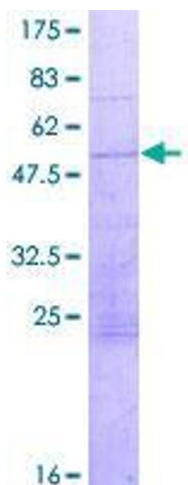


Image 1.