

Datasheet for ABIN1348354

Calicin Protein (CCIN) (AA 1-588) (GST tag)



[Go to Product page](#)

1 Image

Overview

Quantity:	25 µg
Target:	Calicin (CCIN)
Protein Characteristics:	AA 1-588
Origin:	Human
Source:	Wheat germ
Protein Type:	Recombinant
Purification tag / Conjugate:	This Calicin protein is labelled with GST tag.
Application:	ELISA, Western Blotting (WB), Antibody Array (AA), Affinity Purification (AP)

Product Details

Purpose:	CCIN (Human) Recombinant Protein (P01)
Sequence:	MKLEFTEKNY NSFVLQNLNR QRKRKEYWDM ALSVDNHVFF AHRNVLAAVS PLVRSLISSN DMKTADELFI TIDTSYLSPV TVDQLLDYFY SGKVWISEQN VEELLRGAQY FNTPRLRVHC NDFLIKSICR ANCLRYLFLA ELFELKEVSD VAYSGIRDNF HYWASPEGSM HFMRCPPVIF GRLLRDENLH VLNEDQALSA LINWVYFRKE DREKYFKKFF NYINLNAVSN KTLVFASNKL VGMENSSHT TLIESVLMDR KQERPCSLLV YQRKGALLDS VVILGGQKAH GQFNDGVFAY IIQENLWMKL SDMPYRAAAL SATSAGRIY ISGGTTEQIS GLKTAWRYDM DDNSWTKLPD LPIGLVFHTM VTCGGTVYSV GGSIAPRRYV SNIYRYDERK EVWCLAGKMS IPMDGTAVIT KGDRLHYIVT GRWLVKGYIS RVGVVDCFDT STGDVVQCIT FPIEFNHRPL LSFQQDNILC VHSHRQSVEI NLQKVKASKT TTSVPVLPNS CPLDVSHAIC SIGDSKVFVC GGVTTASDVQ TKDYTINPNA FLLDQKTGKW KTLAPPPEAL DCPACCLAKL PCKILQRI
Characteristics:	Human CCIN full-length ORF (NP_005884.1, 1 a.a. - 588 a.a.) recombinant protein with GST-tag

Product Details

at N-terminal.

Purification: in vitro wheat germ expression system

Target Details

Target: Calicin (CCIN)

Alternative Name: CCIN ([CCIN Products](#))

Background: Full Gene Name: calicin
Synonyms:

Gene ID: 881

NCBI Accession: [NM_005893](#)

Application Details

Application Notes: Optimal working dilution should be determined by the investigator.

Comment: Preparation method: in vitro, wheat germ expression system
Product Quality tested by: 12.5% SDS-PAGE Stained with Coomassie Blue.

Restrictions: For Research Use only

Handling

Buffer: 50 mM Tris-HCl, 10 mM reduced Glutathione, pH =8.0 in the elution buffer.

Handling Advice: Aliquot to avoid repeated freezing and thawing.

Storage: -80 °C

Storage Comment: Best use within three months from the date of receipt of this protein.

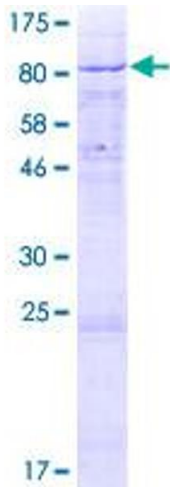


Image 1.