

Datasheet for ABIN1348360
CCL1 Protein (AA 1-96) (GST tag)



[Go to Product page](#)

1 Image

Overview

Quantity:	10 µg
Target:	CCL1
Protein Characteristics:	AA 1-96
Origin:	Human
Source:	Wheat germ
Protein Type:	Recombinant
Purification tag / Conjugate:	This CCL1 protein is labelled with GST tag.
Application:	Western Blotting (WB), ELISA, Antibody Array (AA), Affinity Purification (AP)

Product Details

Purpose:	CCL1 (Human) Recombinant Protein (P01)
Sequence:	MQIITTALVC LLLAGMWPEP VDSKSMQVPF SRCCFSFAEQ EIPLRAILCY RNTSSICSNE GLIFKLRGK EACALDTVGW VQRHRKMLRH CPSKRK
Characteristics:	Human CCL1 full-length ORF (NP_002972.1, 1 a.a. - 96 a.a.) recombinant protein with GST-tag at N-terminal.
Purification:	in vitro wheat germ expression system

Target Details

Target:	CCL1
Alternative Name:	CCL1 (CCL1 Products)

Target Details

Background: Full Gene Name: chemokine (C-C motif) ligand 1
Synonyms: I-309,P500,SCYA1,SISe,TCA3

Gene ID: 6346

NCBI Accession: [NM_002981](#)

Application Details

Application Notes: Optimal working dilution should be determined by the investigator.

Comment: Preparation method: in vitro, wheat germ expression system
Product Quality tested by: 12.5% SDS-PAGE Stained with Coomassie Blue.

Restrictions: For Research Use only

Handling

Buffer: 50 mM Tris-HCl, 10 mM reduced Glutathione, pH =8.0 in the elution buffer.

Handling Advice: Aliquot to avoid repeated freezing and thawing.

Storage: -80 °C

Storage Comment: Best use within three months from the date of receipt of this protein.

Images

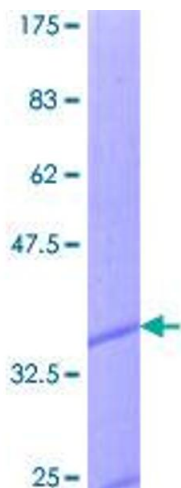


Image 1.