



[Go to Product page](#)

Datasheet for ABIN1348371

CCL15 Protein (AA 1-113) (GST tag)

1 Image

Overview

Quantity:	10 µg
Target:	CCL15
Protein Characteristics:	AA 1-113
Origin:	Human
Source:	Wheat germ
Protein Type:	Recombinant
Purification tag / Conjugate:	This CCL15 protein is labelled with GST tag.
Application:	Western Blotting (WB), ELISA, Antibody Array (AA), Affinity Purification (AP)

Product Details

Purpose:	CCL15 (Human) Recombinant Protein (P01)
Sequence:	MKVSVAALSC LMLVAVLGSQ AQFINDAETE LMMSKLPLEN PVVLNSFHFA ADCCTSYSISQ SIPCSLMKSY FETSSECSKP GVIFLTKKGR QVCAKPSGPG VQDCMKKLP YSI
Characteristics:	Human CCL15 full-length ORF (NP_004158.2, 1 a.a. - 113 a.a.) recombinant protein with GST-tag at N-terminal.
Purification:	in vitro wheat germ expression system

Target Details

Target:	CCL15
Alternative Name:	CCL15 (CCL15 Products)

Target Details

Background:	Full Gene Name: chemokine (C-C motif) ligand 15 Synonyms: HCC-2,HMRP-2B,LKN1,Lkn-1,MIP-1d,MIP-5,NCC-3,NCC3,SCYA15,SCYL3,SY15
Gene ID:	6359
NCBI Accession:	NM_004167

Application Details

Application Notes:	Optimal working dilution should be determined by the investigator.
Comment:	Preparation method: in vitro, wheat germ expression system Product Quality tested by: 12.5% SDS-PAGE Stained with Coomassie Blue.
Restrictions:	For Research Use only

Handling

Buffer:	50 mM Tris-HCl, 10 mM reduced Glutathione, pH =8.0 in the elution buffer.
Handling Advice:	Aliquot to avoid repeated freezing and thawing.
Storage:	-80 °C
Storage Comment:	Best use within three months from the date of receipt of this protein.

Images

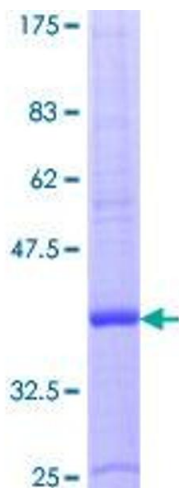


Image 1.