



[Go to Product page](#)

Datasheet for ABIN1348387

CCL2 Protein (AA 1-99) (GST tag)

1 Image

Overview

Quantity:	10 µg
Target:	CCL2
Protein Characteristics:	AA 1-99
Origin:	Human
Source:	Wheat germ
Protein Type:	Recombinant
Purification tag / Conjugate:	This CCL2 protein is labelled with GST tag.
Application:	Western Blotting (WB), ELISA, Affinity Purification (AP), Antibody Array (AA)

Product Details

Purpose:	CCL2 (Human) Recombinant Protein (P01)
Sequence:	MKVSAALLCL LLIAATFIPQ GLAQPDAINA PVTCCYNFTN RKISVQLAS YRRITSSKCP KEAVIFKTIV AKEICADPKQ KVVQDSMDHL DKQTQTPKT
Characteristics:	Human CCL2 full-length ORF (AAH09716, 1 a.a. - 99 a.a.) recombinant protein with GST-tag at N-terminal.
Purification:	in vitro wheat germ expression system

Target Details

Target:	CCL2
Alternative Name:	CCL2 (CCL2 Products)

Target Details

Background: Full Gene Name: chemokine (C-C motif) ligand 2
Synonyms: GDCF-2,HC11,HSMCR30,MCAF,MCP-1,MCP1,MGC9434,SCYA2,SMC-CF

Gene ID: 6347

Pathways: [Cellular Response to Molecule of Bacterial Origin](#), [Positive Regulation of Immune Effector Process](#), [ER-Nucleus Signaling](#), [Unfolded Protein Response](#), [The Global Phosphorylation Landscape of SARS-CoV-2 Infection](#)

Application Details

Application Notes: Optimal working dilution should be determined by the investigator.

Comment: Preparation method: in vitro, wheat germ expression system
Product Quality tested by: 12.5% SDS-PAGE Stained with Coomassie Blue.

Restrictions: For Research Use only

Handling

Buffer: 50 mM Tris-HCl, 10 mM reduced Glutathione, pH =8.0 in the elution buffer.

Handling Advice: Aliquot to avoid repeated freezing and thawing.

Storage: -80 °C

Storage Comment: Best use within three months from the date of receipt of this protein.

Images

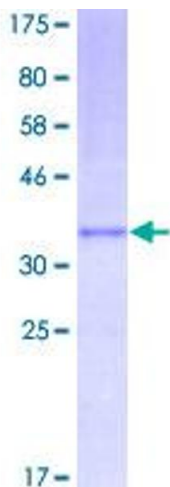


Image 1.