



[Go to Product page](#)

Datasheet for ABIN1348396

CCL23 Protein (AA 1-137) (GST tag)

1 Image

Overview

Quantity:	25 µg
Target:	CCL23
Protein Characteristics:	AA 1-137
Origin:	Human
Source:	Wheat germ
Protein Type:	Recombinant
Purification tag / Conjugate:	This CCL23 protein is labelled with GST tag.
Application:	Western Blotting (WB), ELISA, Affinity Purification (AP), Antibody Array (AA)

Product Details

Purpose:	CCL23 (Human) Recombinant Protein (P01)
Sequence:	MKVSVAALSC LMLVTALGSQ ARVTKDAETE FMMSKLPLEN PVLLDMLWRR KIGPQMTLSH AAGFHATSAD CCISYTPRSI PCSLLESYFE TNSECSKPGV IFLTKKGRRF CANPSDKQVQ VCVRMLKLDL RIKTRKN
Characteristics:	Human CCL23 full-length ORF (NP_005055.2, 1 a.a. - 137 a.a.) recombinant protein with GST-tag at N-terminal.
Purification:	in vitro wheat germ expression system

Target Details

Target:	CCL23
Alternative Name:	CCL23 (CCL23 Products)

Target Details

Background:	Gene: chemokine (C-C motif) ligand 23 Synonyms: CK-BETA-8, CKb8, Ckb-8, Ckb-8-1, MIP-3, MIP3, MPIF-1, SCYA23
Gene ID:	6368
NCBI Accession:	NM_005064

Application Details

Application Notes:	Optimal working dilution should be determined by the investigator.
Restrictions:	For Research Use only

Handling

Buffer:	50 mM Tris-HCl, 10 mM reduced Glutathione, pH =8.0 in the elution buffer.
Handling Advice:	Aliquot to avoid repeated freezing and thawing.
Storage:	-80 °C
Storage Comment:	Best use within three months from the date of receipt of this protein.

Images

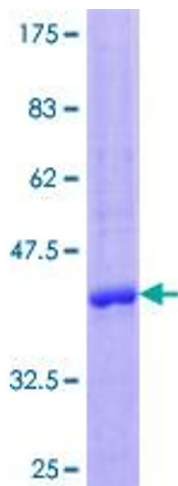


Image 1.