

Datasheet for ABIN1348487

Cyclin T1 Protein (CCNT1) (AA 321-420) (GST tag)



[Go to Product page](#)

1 Image

Overview

Quantity:	10 µg
Target:	Cyclin T1 (CCNT1)
Protein Characteristics:	AA 321-420
Origin:	Human
Source:	Wheat germ
Protein Type:	Recombinant
Purification tag / Conjugate:	This Cyclin T1 protein is labelled with GST tag.
Application:	ELISA, Western Blotting (WB), Antibody Array (AA), Affinity Purification (AP)

Product Details

Purpose:	CCNT1 (Human) Recombinant Protein (Q01)
Sequence:	SNLTSVEMLP GKRWLSSQPS FKLEPTQGHR TSENLALTGV DHSLPQDGSN AFISQKQNSK SVPSAKVSLK EYRAKHAEEL AAQKRQLENM EANVKSQYAY
Characteristics:	Human CCNT1 partial ORF (NP_001231, 321 a.a. - 420 a.a.) recombinant protein with GST-tag at N-terminal.
Purification:	in vitro wheat germ expression system

Target Details

Target:	Cyclin T1 (CCNT1)
Alternative Name:	CCNT1 (CCNT1 Products)

Target Details

Background:	Full Gene Name: cyclin T1 Synonyms: CCNT,CYCT1
Gene ID:	904
NCBI Accession:	NM_001240

Application Details

Application Notes:	Optimal working dilution should be determined by the investigator.
Comment:	Preparation method: in vitro, wheat germ expression system Product Quality tested by: 12.5% SDS-PAGE Stained with Coomassie Blue.
Restrictions:	For Research Use only

Handling

Buffer:	50 mM Tris-HCl, 10 mM reduced Glutathione, pH =8.0 in the elution buffer.
Handling Advice:	Aliquot to avoid repeated freezing and thawing.
Storage:	-80 °C
Storage Comment:	Best use within three months from the date of receipt of this protein.

Images

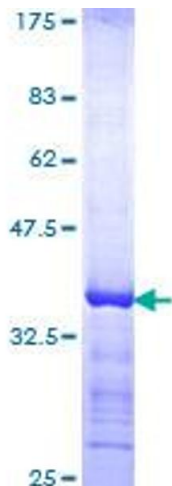


Image 1.