



[Go to Product page](#)

Datasheet for ABIN1348493

## CCR10 Protein (AA 1-362) (GST tag)

### 1 Image

#### Overview

Quantity:	10 µg
Target:	CCR10
Protein Characteristics:	AA 1-362
Origin:	Human
Source:	Wheat germ
Protein Type:	Recombinant
Purification tag / Conjugate:	This CCR10 protein is labelled with GST tag.
Application:	Western Blotting (WB), ELISA, Affinity Purification (AP), Antibody Array (AA)

#### Product Details

Purpose:	CCR10 (Human) Recombinant Protein (P01)
Sequence:	MGTEATEQVS WGHYSGDEED AYSAEPLPEL CYKADVQAFS RAFQPSVSLT VAALGLAGNG LVLATHLAAR RAARSPTSAH LLQLALADLL LAL TLPFAAA GALQGWSLGS ATCRTISGLY SASFHAGFLF LACISADRYV AIARALPAGP RPSTPGRAHL VSVIVWLLSL LLALPALLFS QDGQREGQRR CRLIFPEGLT QTVKGASAVA QVALGFALPL GVMVACYALL GRTLLAARGP ERRRALRVV ALVAAFVVLQ LPYSLALLLD TADLLAARER SCPASKRKDV ALLVTSGLAL ARCGLNPVLY AFLGLRFRQD LRLLRGGSC PSGPQPRRG PRRPRLSSCS APTETHSLSW DN
Characteristics:	Human CCR10 full-length ORF ( AAH98132.1, 1 a.a. - 362 a.a.) recombinant protein with GST-tag at N-terminal.
Purification:	in vitro wheat germ expression system

## Target Details

Target:	CCR10
Alternative Name:	CCR10 ( <a href="#">CCR10 Products</a> )
Background:	Full Gene Name: chemokine (C-C motif) receptor 10 Synonyms: GPR2
Gene ID:	2826

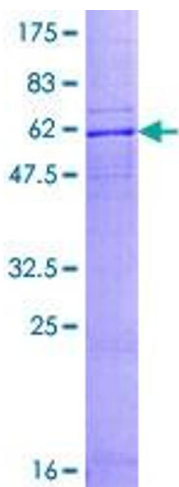
## Application Details

Application Notes:	Optimal working dilution should be determined by the investigator.
Comment:	Preparation method: in vitro, wheat germ expression system Product Quality tested by: 12.5% SDS-PAGE Stained with Coomassie Blue.
Restrictions:	For Research Use only

## Handling

Buffer:	50 mM Tris-HCl, 10 mM reduced Glutathione, pH =8.0 in the elution buffer.
Handling Advice:	Aliquot to avoid repeated freezing and thawing.
Storage:	-80 °C
Storage Comment:	Best use within three months from the date of receipt of this protein.

## Images



**Image 1.**