

Datasheet for ABIN1348500
CCR8 Protein (AA 1-355) (GST tag)



[Go to Product page](#)

1 Image

Overview

Quantity:	25 µg
Target:	CCR8
Protein Characteristics:	AA 1-355
Origin:	Human
Source:	Wheat germ
Protein Type:	Recombinant
Purification tag / Conjugate:	This CCR8 protein is labelled with GST tag.
Application:	Western Blotting (WB), ELISA, Affinity Purification (AP), Antibody Array (AA)

Product Details

Purpose:	CCR8 (Human) Recombinant Protein (P01)
Sequence:	MDYTLDL SVT TVTDYYYPDI FSSPCDAELI QTNGKLLLAV FYCLLFV FSL LGNSLVILVL VVCKKLR SIT DVYLLNLALS DLLFVFSFPF QTYLLDQWV FGTVMCKVVS GFYYIGFYSS MFFITLMSVD RYLAVVHAVY ALKVRTIRMG TTLCLAVWLT AIMATIPLL V FYQVASEDGV LQCYSFYNNQ TLKWKIFTNF KMNILGLLIP FTIFMFCYIK ILHQLKRCQN HNKTKAIRLV LIVVIASLLF WVPFNVLFL TSLHSMHILD GCSISQQLTY ATHVTEIISF THCCVNPVIY AFVGEKFKKH LSEIFQKSCS QIFNYLGRQM PRESCEKSSS CQQHSSRSSS VDYIL
Characteristics:	Human CCR8 full-length ORF (NP_005192.1, 1 a.a. - 355 a.a.) recombinant protein with GST-tag at N-terminal.
Purification:	in vitro wheat germ expression system

Target Details

Target:	CCR8
Alternative Name:	CCR8 (CCR8 Products)
Background:	Full Gene Name: chemokine (C-C motif) receptor 8 Synonyms: CDw198,CKR-L1,CKRL1,CMKBR8,CMKBRL2,CY6,GPR-CY6,MGC129966,MGC129973,TER1
Gene ID:	1237
NCBI Accession:	NM_005201

Application Details

Application Notes:	Heating may cause protein aggregation. Please do not heat this product before electrophoresis.
Comment:	Preparation method: in vitro, wheat germ expression system Product Quality tested by: 12.5% SDS-PAGE Stained with Coomassie Blue.
Restrictions:	For Research Use only

Handling

Buffer:	50 mM Tris-HCl, 10 mM reduced Glutathione, pH =8.0 in the elution buffer.
Handling Advice:	Aliquot to avoid repeated freezing and thawing.
Storage:	-80 °C
Storage Comment:	Best use within three months from the date of receipt of this protein.

Images

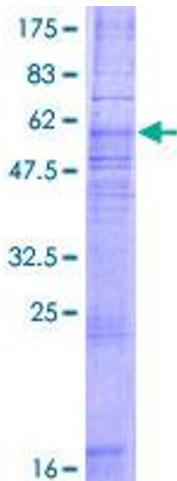


Image 1.