



[Go to Product page](#)

Datasheet for ABIN1348505

CCRL1 Protein (AA 1-350) (GST tag)

1 Image

Overview

Quantity:	25 µg
Target:	CCRL1
Protein Characteristics:	AA 1-350
Origin:	Human
Source:	Wheat germ
Protein Type:	Recombinant
Purification tag / Conjugate:	This CCRL1 protein is labelled with GST tag.
Application:	ELISA, Western Blotting (WB), Affinity Purification (AP), Antibody Array (AA)

Product Details

Purpose:	CCRL1 (Human) Recombinant Protein (P01)
Sequence:	MALEQNQSTD YYYEENEMNG TYDYSQYELI CIKEDVREFA KVFLPVFLTI VFVIGLAGNS MVVAIYAYYK KQRTKTDVYI LNLAVADLLL LFTLPFWAVN AVHGWVLGKI MCKITSALYT LNFVSGMQFL ACISIDRYVA VTKVPSQSGV GKPCWIIICFC VWMAAILLSI PQLVFYTVND NARCIPIFPR YLGTSMKALI QMLEICIGFV VPFLIMGVCY FITARTLMKM PNIKISRPLK VLLTVVIVFI VTQLPYNIVK FCRAIDIYS LITSCNMSKR MDIAIQVTES IALFHSLNLP ILYVFMGASF KNYVMKVAKK YGSWRRQRQS VEEFPFDSEG PTEPTSTFSI
Characteristics:	Human CCRL1 full-length ORF (NP_057641.1, 1 a.a. - 350 a.a.) recombinant protein with GST-tag at N-terminal.
Purification:	in vitro wheat germ expression system

Target Details

Target:	CCRL1
Alternative Name:	CCRL1 (CCRL1 Products)
Background:	Full Gene Name: chemokine (C-C motif) receptor-like 1 Synonyms: CC-CKR-11,CCBP2,CCR10,CCR11,CCX-CKR,CKR-11,PPR1,VSHK1
Gene ID:	51554
NCBI Accession:	NM_016557

Application Details

Application Notes:	Optimal working dilution should be determined by the investigator.
Comment:	Preparation method: in vitro, wheat germ expression system Product Quality tested by: 12.5% SDS-PAGE Stained with Coomassie Blue.
Restrictions:	For Research Use only

Handling

Buffer:	50 mM Tris-HCl, 10 mM reduced Glutathione, pH =8.0 in the elution buffer.
Handling Advice:	Aliquot to avoid repeated freezing and thawing.
Storage:	-80 °C
Storage Comment:	Best use within three months from the date of receipt of this protein.

Images

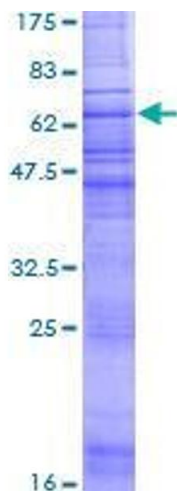


Image 1.