

Datasheet for ABIN1348538

CD163 Protein (CD163) (AA 78-168) (GST tag)



[Go to Product page](#)

1 Image

Overview

Quantity:	10 µg
Target:	CD163
Protein Characteristics:	AA 78-168
Origin:	Human
Source:	Wheat germ
Protein Type:	Recombinant
Purification tag / Conjugate:	This CD163 protein is labelled with GST tag.
Application:	Western Blotting (WB), ELISA, Antibody Array (AA), Affinity Purification (AP)

Product Details

Purpose:	CD163 (Human) Recombinant Protein (Q01)
Sequence:	NGWSMEAVSV ICNQLGCPTA IKAPGWANSS AGSGRIWMDH VSCRGNESAL WDCKHDGWGK HSNCTHQQDA GVTCS DGSNL EMRLTRGGNM C
Characteristics:	Human CD163 partial ORF (NP_004235, 78 a.a. - 168 a.a.) recombinant protein with GST-tag at N-terminal.
Purification:	in vitro wheat germ expression system

Target Details

Target:	CD163
Alternative Name:	CD163 (CD163 Products)

Target Details

Background: Full Gene Name: CD163 Molecule
Synonyms: M130,MM130

Gene ID: 9332

NCBI Accession: [NM_004244](#)

Application Details

Application Notes: Optimal working dilution should be determined by the investigator.

Comment: Preparation method: in vitro, wheat germ expression system
Product Quality tested by: 12.5% SDS-PAGE Stained with Coomassie Blue.

Restrictions: For Research Use only

Handling

Buffer: 50 mM Tris-HCl, 10 mM reduced Glutathione, pH =8.0 in the elution buffer.

Handling Advice: Aliquot to avoid repeated freezing and thawing.

Storage: -80 °C

Storage Comment: Best use within three months from the date of receipt of this protein.

Images

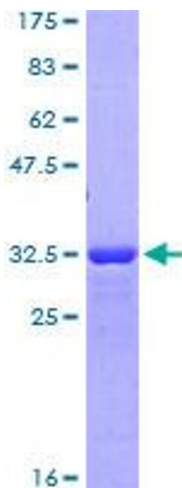


Image 1.