

Datasheet for ABIN1348558  
**CD1c Protein (AA 77-185) (GST tag)**



[Go to Product page](#)

1 Image

Overview

Quantity:	10 µg
Target:	CD1c (CD1C)
Protein Characteristics:	AA 77-185
Origin:	Human
Source:	Wheat germ
Protein Type:	Recombinant
Purification tag / Conjugate:	This CD1c protein is labelled with GST tag.
Application:	ELISA, Western Blotting (WB), Antibody Array (AA), Affinity Purification (AP)

Product Details

Purpose:	CD1C (Human) Recombinant Protein (Q01)
Sequence:	SNEELSDLEL LFRFYLFGLT REIQDHASQD YSKYPFEVQV KAGCELHSGK SPEGFFQVAF NGLDLLSFQN TTWVSPGCG SLAQSVCHLL NHQYEGVTET VYNLIRSTC
Characteristics:	Human CD1C partial ORF ( NP_001756, 77 a.a. - 185 a.a.) recombinant protein with GST-tag at N-terminal.
Purification:	in vitro wheat germ expression system

Target Details

Target:	CD1c (CD1C)
Alternative Name:	CD1C ( <a href="#">CD1C Products</a> )

## Target Details

Background:	Full Gene Name: CD1c molecule Synonyms: BDCA1,CD1,CD1A,R7
Gene ID:	911
NCBI Accession:	<a href="#">NM_001765</a>

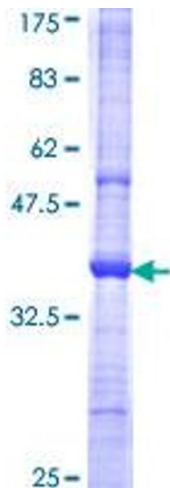
## Application Details

Application Notes:	Optimal working dilution should be determined by the investigator.
Comment:	Preparation method: in vitro, wheat germ expression system Product Quality tested by: 12.5% SDS-PAGE Stained with Coomassie Blue.
Restrictions:	For Research Use only

## Handling

Buffer:	50 mM Tris-HCl, 10 mM reduced Glutathione, pH =8.0 in the elution buffer.
Handling Advice:	Aliquot to avoid repeated freezing and thawing.
Storage:	-80 °C
Storage Comment:	Best use within three months from the date of receipt of this protein.

## Images



**Image 1.**