

Datasheet for ABIN1348579
2B4 Protein (AA 1-365) (GST tag)



[Go to Product page](#)

1 Image

Overview

Quantity:	25 µg
Target:	2B4 (CD244)
Protein Characteristics:	AA 1-365
Origin:	Human
Source:	Wheat germ
Protein Type:	Recombinant
Purification tag / Conjugate:	This 2B4 protein is labelled with GST tag.
Application:	Western Blotting (WB), ELISA, Affinity Purification (AP), Antibody Array (AA)

Product Details

Purpose:	CD244 (Human) Recombinant Protein (P01)
Sequence:	MLGQVVTLL LLLLKVYQ GK GCQGSADHVV SISGVPLQLQ PNSIQTKVDS IAWKKLLPSQ NGFHHILKWE NGSLPSNTSN DRFSFIVKNL SLLIKAAQQQ DSGLYCLEVT SISGKVQTAT FQVFVFDKVE KPRLQGQGKI LDRGRCQVAL SCLVSRDGNV SYAWYRGSKL IQTAGNLTYL DEEVDINGTH TYTCNVSNPV SWESHTLNLT QDCQNAHQEF RFWPFLVIIV ILSALFLGTL ACFCVWRRKR KEKQSETSPK EFLTIYEDVK DLKTRRNHEQ EQTFPGGGST IYSMIQSQSS APTSQEPAYT LYSLIQPSRK SGSRKRNHSP SFNSTIYEVI GKSQPKAQNP ARLSRKELEN FDVYS
Characteristics:	Human CD244 full-length ORF (NP_057466.1, 1 a.a. - 365 a.a.) recombinant protein with GST-tag at N-terminal.
Purification:	in vitro wheat germ expression system

Target Details

Target:	2B4 (CD244)
Alternative Name:	CD244 (CD244 Products)
Background:	Full Gene Name: CD244 Molecule, natural killer cell receptor 2B4 Synonyms: 2B4,NAIL,NKR2B4,Nmrk,SLAMF4
Gene ID:	51744
NCBI Accession:	NM_016382

Application Details

Application Notes:	Optimal working dilution should be determined by the investigator.
Comment:	Preparation method: in vitro, wheat germ expression system Product Quality tested by: 12.5% SDS-PAGE Stained with Coomassie Blue.
Restrictions:	For Research Use only

Handling

Buffer:	50 mM Tris-HCl, 10 mM reduced Glutathione, pH =8.0 in the elution buffer.
Handling Advice:	Aliquot to avoid repeated freezing and thawing.
Storage:	-80 °C
Storage Comment:	Best use within three months from the date of receipt of this protein.

Images

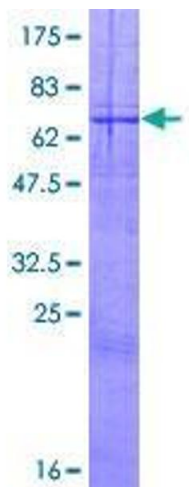


Image 1.