

Datasheet for ABIN1348598
CD28 Protein (CD28) (AA 1-220) (GST tag)



[Go to Product page](#)

1 Image

Overview

Quantity:	25 µg
Target:	CD28
Protein Characteristics:	AA 1-220
Origin:	Human
Source:	Wheat germ
Protein Type:	Recombinant
Purification tag / Conjugate:	This CD28 protein is labelled with GST tag.
Application:	Western Blotting (WB), ELISA, Affinity Purification (AP), Antibody Array (AA)

Product Details

Purpose:	CD28 (Human) Recombinant Protein (P01)
Sequence:	MLRLLLALNL FPSIQVTGNK ILVKQSPMLV AYDNAVNLSC KYSYNLFSRE FRASLHKGLD SAVEVCVVYG NYSQQQLQVYS KTGFNCDGKL GNESVTFYLQ NLYVNQTDIY FCKIEVMYPP PYLDNEKSNG TIIHVKGKHL CPSPLFPGPS KPFWVLVVVG GVLACYSLLV TVAFIIFWVR SKRSRLLHSD YMNMTPRRPG PTRKHYPYA PPRDFAAYRS
Characteristics:	Human CD28 full-length ORF (AAH93698.1, 1 a.a. - 220 a.a.) recombinant protein with GST-tag at N-terminal.
Purification:	in vitro wheat germ expression system

Target Details

Target:	CD28
---------	------

Target Details

Alternative Name:	CD28 (CD28 Products)
Background:	Full Gene Name: CD28 Molecule Synonyms: MGC138290,Tp44
Gene ID:	940
Pathways:	TCR Signaling , Fc-epsilon Receptor Signaling Pathway , EGFR Signaling Pathway , Regulation of Leukocyte Mediated Immunity , Positive Regulation of Immune Effector Process , Production of Molecular Mediator of Immune Response

Application Details

Application Notes:	Optimal working dilution should be determined by the investigator.
Comment:	Preparation method: in vitro, wheat germ expression system Product Quality tested by: 12.5% SDS-PAGE Stained with Coomassie Blue.
Restrictions:	For Research Use only

Handling

Buffer:	50 mM Tris-HCl, 10 mM reduced Glutathione, pH =8.0 in the elution buffer.
Handling Advice:	Aliquot to avoid repeated freezing and thawing.
Storage:	-80 °C
Storage Comment:	Best use within three months from the date of receipt of this protein.

Images

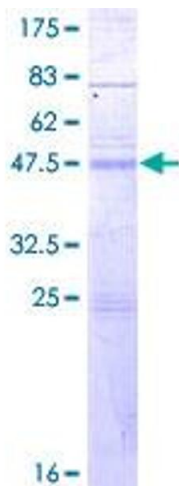


Image 1.