

Datasheet for ABIN1348651

## CD40 Ligand Protein (CD40LG) (AA 101-203) (GST tag)



[Go to Product page](#)

### 1 Image

#### Overview

Quantity:	10 µg
Target:	CD40 Ligand (CD40LG)
Protein Characteristics:	AA 101-203
Origin:	Human
Source:	Wheat germ
Protein Type:	Recombinant
Purification tag / Conjugate:	This CD40 Ligand protein is labelled with GST tag.
Application:	Western Blotting (WB), ELISA, Affinity Purification (AP), Antibody Array (AA)

#### Product Details

Purpose:	CD40LG (Human) Recombinant Protein (Q01)
Sequence:	NKEETKKENS FEMQKGDQNP QIAAHVISEA SSKTTSVLQW AEKGYTMSN NLVTLENGKQ LTVKRQGLYY IYAQVTFCSN REASSQAPFI ASLCLKSPGR FER
Characteristics:	Human CD40LG partial ORF ( NP_000065, 101 a.a. - 203 a.a.) recombinant protein with GST-tag at N-terminal.
Purification:	in vitro wheat germ expression system

#### Target Details

Target:	CD40 Ligand (CD40LG)
Alternative Name:	CD40LG ( <a href="#">CD40LG Products</a> )

## Target Details

Background:	Full Gene Name: CD40 ligand Synonyms: CD154,CD40L,HIGM1,IGM,IMD3,T-BAM,TNFSF5,TRAP,gp39,hCD40L
Gene ID:	959
NCBI Accession:	<a href="#">NM_000074</a>
Pathways:	<a href="#">NF-kappaB Signaling</a> , <a href="#">Production of Molecular Mediator of Immune Response</a> , <a href="#">Cancer Immune Checkpoints</a>

## Application Details

Application Notes:	Optimal working dilution should be determined by the investigator.
Comment:	Preparation method: in vitro, wheat germ expression system Product Quality tested by: 12.5% SDS-PAGE Stained with Coomassie Blue.
Restrictions:	For Research Use only

## Handling

Buffer:	50 mM Tris-HCl, 10 mM reduced Glutathione, pH =8.0 in the elution buffer.
Handling Advice:	Aliquot to avoid repeated freezing and thawing.
Storage:	-80 °C
Storage Comment:	Best use within three months from the date of receipt of this protein.

## Images

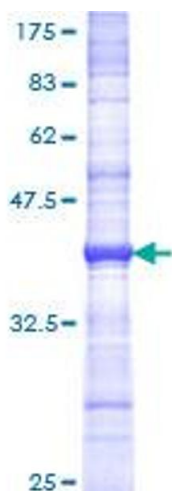


Image 1.