



[Go to Product page](#)

Datasheet for ABIN1348658

## CD46 Protein (CD46) (AA 36-135) (GST tag)

### 1 Image

#### Overview

Quantity:	10 µg
Target:	CD46
Protein Characteristics:	AA 36-135
Origin:	Human
Source:	Wheat germ
Protein Type:	Recombinant
Purification tag / Conjugate:	This CD46 protein is labelled with GST tag.
Application:	Western Blotting (WB), ELISA, Affinity Purification (AP), Antibody Array (AA)

#### Product Details

Purpose:	CD46 (Human) Recombinant Protein (Q01)
Sequence:	EEPPTFEAME LIGKPKPYE IGERVDYKCK KGYFYIPPLA THTICDRNHT WLPVSDDACY RETCPYIRDP LNGQAVPANG TYEFGYQMHF ICNEGYYLIG
Characteristics:	Human CD46 partial ORF ( AAH30594, 36 a.a. - 135 a.a.) recombinant protein with GST-tag at N-terminal.
Purification:	in vitro wheat germ expression system

#### Target Details

Target:	CD46
Alternative Name:	CD46 ( <a href="#">CD46 Products</a> )

## Target Details

Background:	Full Gene Name: CD46 Molecule, complement regulatory protein Synonyms: MCP,MGC26544,MIC10,TLX,TRA2.10
Gene ID:	4179
Pathways:	<a href="#">Regulation of Actin Filament Polymerization</a>

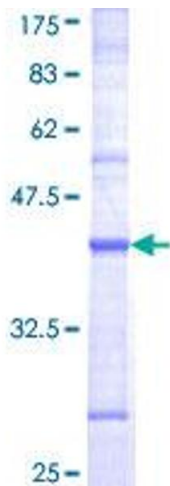
## Application Details

Application Notes:	Optimal working dilution should be determined by the investigator.
Comment:	Preparation method: in vitro, wheat germ expression system Product Quality tested by: 12.5% SDS-PAGE Stained with Coomassie Blue.
Restrictions:	For Research Use only

## Handling

Buffer:	50 mM Tris-HCl, 10 mM reduced Glutathione, pH =8.0 in the elution buffer.
Handling Advice:	Aliquot to avoid repeated freezing and thawing.
Storage:	-80 °C
Storage Comment:	Best use within three months from the date of receipt of this protein.

## Images



**Image 1.**