



[Go to Product page](#)

Datasheet for ABIN1348761

## CDC123 Protein (AA 1-336) (GST tag)

### 1 Image

#### Overview

Quantity:	10 µg
Target:	CDC123
Protein Characteristics:	AA 1-336
Origin:	Human
Source:	Wheat germ
Protein Type:	Recombinant
Purification tag / Conjugate:	This CDC123 protein is labelled with GST tag.
Application:	ELISA, Western Blotting (WB), Antibody Array (AA), Affinity Purification (AP)

#### Product Details

Purpose:	C10orf7 (Human) Recombinant Protein (P01)
Sequence:	MKKEHVLHCQ FSAWYPPFRG VTIKSVILPL PQNVKDYLLD DGTLVVSGRD DPPTHSQPDS DDEAEEIQWS DDENTATLTA PEFPEFATKV QEAINSLGGS VFPKLNWSAP RDAYWIAMNS SLKCKTLSDI FLLFKSSDFI TRDFTQPFIH CTDDSPDPCI EYELVLRKWC ELIPGAEFRC FVKENKLIGI SQRDYTQYYD HISKQKEEIR RCIQDFFKKH IQYKFLDEDF VFDIYRDSRG KVWLIDFNPV GEVTDSSLFT WEELISENNL NGDFSEVDAQ EQDSPAFRCT NSEVTVQPSP YLSYRLPKDF VDLSTGEDAH KLIDFLKLR NQQEDD
Characteristics:	Human C10orf7 full-length ORF ( AAH09598, 1 a.a. - 336 a.a.) recombinant protein with GST-tag at N-terminal.
Purification:	in vitro wheat germ expression system

## Target Details

Target:	CDC123
Alternative Name:	CDC123 ( <a href="#">CDC123 Products</a> )
Background:	Full Gene Name: cell division cycle 123 homolog ( <i>S. cerevisiae</i> ) Synonyms: C10orf7,D123,FLJ13863
Gene ID:	8872

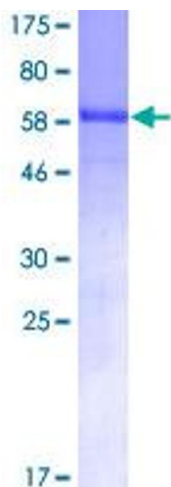
## Application Details

Application Notes:	Optimal working dilution should be determined by the investigator.
Comment:	Preparation method: in vitro, wheat germ expression system Product Quality tested by: 12.5% SDS-PAGE Stained with Coomassie Blue.
Restrictions:	For Research Use only

## Handling

Buffer:	50 mM Tris-HCl, 10 mM reduced Glutathione, pH =8.0 in the elution buffer.
Handling Advice:	Aliquot to avoid repeated freezing and thawing.
Storage:	-80 °C
Storage Comment:	Best use within three months from the date of receipt of this protein.

## Images



**Image 1.**