



[Go to Product page](#)

Datasheet for ABIN1348763

CDC123 Protein (AA 235-336) (GST tag)

1 Image

Overview

Quantity:	10 µg
Target:	CDC123
Protein Characteristics:	AA 235-336
Origin:	Human
Source:	Wheat germ
Protein Type:	Recombinant
Purification tag / Conjugate:	This CDC123 protein is labelled with GST tag.
Application:	ELISA, Western Blotting (WB), Antibody Array (AA), Affinity Purification (AP)

Product Details

Purpose:	C10orf7 (Human) Recombinant Protein (Q01)
Sequence:	YRDSRGKVWL IDFNPFGEVT DSSLFTWEEL ISENNLNGDF SEVDAQEQDS PAFRCTNSEV TVQPSPYLSY RLPKDFVDLS TGEDAHKLID FLKLRNQQE DD
Characteristics:	Human C10orf7 partial ORF (AAH01600, 235 a.a. - 336 a.a.) recombinant protein with GST-tag at N-terminal.
Purification:	in vitro wheat germ expression system

Target Details

Target:	CDC123
Alternative Name:	CDC123 (CDC123 Products)

Target Details

Background: Full Gene Name: cell division cycle 123 homolog (*S. cerevisiae*)
Synonyms: C10orf7,D123,FLJ13863

Gene ID: 8872

Application Details

Application Notes: Optimal working dilution should be determined by the investigator.

Comment: Preparation method: in vitro, wheat germ expression system
Product Quality tested by: 12.5% SDS-PAGE Stained with Coomassie Blue.

Restrictions: For Research Use only

Handling

Buffer: 50 mM Tris-HCl, 10 mM reduced Glutathione, pH =8.0 in the elution buffer.

Handling Advice: Aliquot to avoid repeated freezing and thawing.

Storage: -80 °C

Storage Comment: Best use within three months from the date of receipt of this protein.

Images

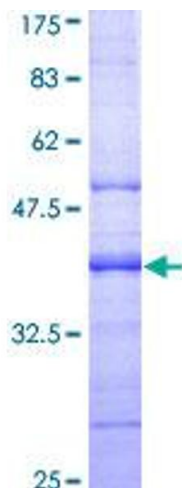


Image 1.