



[Go to Product page](#)

Datasheet for ABIN1348766  
**CDC14A Protein (AA 431-530) (GST tag)**

1 Image

Overview

Quantity:	10 µg
Target:	CDC14A
Protein Characteristics:	AA 431-530
Origin:	Human
Source:	Wheat germ
Protein Type:	Recombinant
Purification tag / Conjugate:	This CDC14A protein is labelled with GST tag.
Application:	ELISA, Western Blotting (WB), Antibody Array (AA), Affinity Purification (AP)

Product Details

Purpose:	CDC14A (Human) Recombinant Protein (Q01)
Sequence:	PFRLSSSLQG SAVTLKTSKM ALSPSATAKR INRTSLSSGA TVRSFSINSR LASSLGNLNA ATDDPENKKT SSSSKAGFTA SPFTNLLNGS SQPTTRNYPE
Characteristics:	Human CDC14A partial ORF ( NP_003663, 431 a.a. - 530 a.a.) recombinant protein with GST-tag at N-terminal.
Purification:	in vitro wheat germ expression system

Target Details

Target:	CDC14A
Alternative Name:	CDC14A ( <a href="#">CDC14A Products</a> )

## Target Details

Background:	Full Gene Name: CDC14 cell division cycle 14 homolog A ( <i>S. cerevisiae</i> ) Synonyms: cdc14,hCDC14
Gene ID:	8556
NCBI Accession:	<a href="#">NM_003672</a>

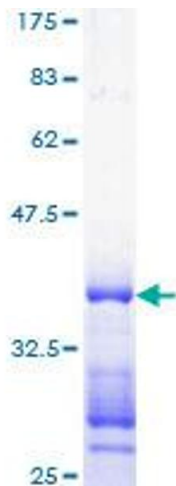
## Application Details

Application Notes:	Optimal working dilution should be determined by the investigator.
Comment:	Preparation method: in vitro, wheat germ expression system Product Quality tested by: 12.5% SDS-PAGE Stained with Coomassie Blue.
Restrictions:	For Research Use only

## Handling

Buffer:	50 mM Tris-HCl, 10 mM reduced Glutathione, pH =8.0 in the elution buffer.
Handling Advice:	Aliquot to avoid repeated freezing and thawing.
Storage:	-80 °C
Storage Comment:	Best use within three months from the date of receipt of this protein.

## Images



**Image 1.**