



[Go to Product page](#)

Datasheet for ABIN1348780

CDC20 Protein (AA 1-100) (GST tag)

1 Image

Overview

Quantity:	10 µg
Target:	CDC20
Protein Characteristics:	AA 1-100
Origin:	Human
Source:	Wheat germ
Protein Type:	Recombinant
Purification tag / Conjugate:	This CDC20 protein is labelled with GST tag.
Application:	Western Blotting (WB), ELISA, Antibody Array (AA), Affinity Purification (AP)

Product Details

Purpose:	CDC20 (Human) Recombinant Protein (Q01)
Sequence:	MAQFAFESDL HSLQLDAPI PNAPPARWQR KAKEAAGPAP SPMRAANRSH SAGRTPGRTP GKSSSKVQTT PSKPGGDRIYI PHRSAAQMEV ASFLLSKENQ
Characteristics:	Human CDC20 partial ORF (NP_001246, 1 a.a. - 100 a.a.) recombinant protein with GST-tag at N-terminal.
Purification:	in vitro wheat germ expression system

Target Details

Target:	CDC20
Alternative Name:	CDC20 (CDC20 Products)

Target Details

Background:	Full Gene Name: cell division cycle 20 homolog (<i>S. cerevisiae</i>) Synonyms: CDC20A,MGC102824,bA276H19.3,p55CDC
Gene ID:	991
NCBI Accession:	NM_001255

Application Details

Application Notes:	Optimal working dilution should be determined by the investigator.
Comment:	Preparation method: in vitro, wheat germ expression system Product Quality tested by: 12.5% SDS-PAGE Stained with Coomassie Blue.
Restrictions:	For Research Use only

Handling

Buffer:	50 mM Tris-HCl, 10 mM reduced Glutathione, pH =8.0 in the elution buffer.
Handling Advice:	Aliquot to avoid repeated freezing and thawing.
Storage:	-80 °C
Storage Comment:	Best use within three months from the date of receipt of this protein.

Images

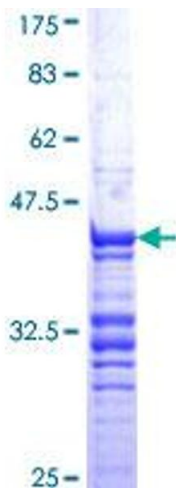


Image 1.