



[Go to Product page](#)

Datasheet for ABIN1348782

CDC20B Protein (AA 1-192) (GST tag)

1 Image

Overview

Quantity:	10 µg
Target:	CDC20B
Protein Characteristics:	AA 1-192
Origin:	Human
Source:	Wheat germ
Protein Type:	Recombinant
Purification tag / Conjugate:	This CDC20B protein is labelled with GST tag.
Application:	ELISA, Western Blotting (WB), Antibody Array (AA), Affinity Purification (AP)

Product Details

Purpose:	FLJ37927 (Human) Recombinant Protein (P01)
Sequence:	MEWKLERTAP RRVRTTEEEML WVLDVSNATY SDFKSNFAKR LSAEVPVASS PITTRWQQSQ TRALSSDSFG EEQSTTYLPE ASGSVLKTPP EKETLTGSC KEQLKTPSKG ISETSNSALH FCKAPHAMDR DWKESVASKG QKCLKQLFVT QNVVQQANGK MQLCEQSECV WKDHFSGSMK KRFEQEDVGG KD
Characteristics:	Human FLJ37927 full-length ORF (AAH37547.1, 1 a.a. - 192 a.a.) recombinant protein with GST-tag at N-terminal.
Purification:	in vitro wheat germ expression system

Target Details

Target:	CDC20B
---------	--------

Target Details

Alternative Name:	CDC20B (CDC20B Products)
Background:	Full Gene Name: cell division cycle 20 homolog B (<i>S. cerevisiae</i>) Synonyms: FLJ37927,G6VTS76519
Gene ID:	166979

Application Details

Application Notes:	Optimal working dilution should be determined by the investigator.
Comment:	Preparation method: in vitro, wheat germ expression system Product Quality tested by: 12.5% SDS-PAGE Stained with Coomassie Blue.
Restrictions:	For Research Use only

Handling

Buffer:	50 mM Tris-HCl, 10 mM reduced Glutathione, pH =8.0 in the elution buffer.
Handling Advice:	Aliquot to avoid repeated freezing and thawing.
Storage:	-80 °C
Storage Comment:	Best use within three months from the date of receipt of this protein.

Images

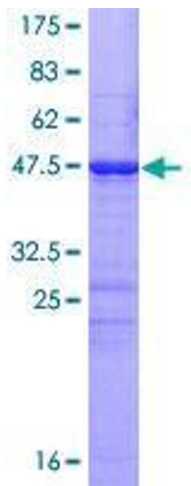


Image 1.