



[Go to Product page](#)

Datasheet for ABIN1348786

CDC23 Protein (AA 1-591) (GST tag)

1 Image

Overview

Quantity:	10 µg
Target:	CDC23
Protein Characteristics:	AA 1-591
Origin:	Human
Source:	Wheat germ
Protein Type:	Recombinant
Purification tag / Conjugate:	This CDC23 protein is labelled with GST tag.
Application:	Western Blotting (WB), ELISA, Antibody Array (AA), Affinity Purification (AP)

Product Details

Purpose:	CDC23 (Human) Recombinant Protein (P01)
Sequence:	MVPVAVTA AV APVLSINSDF SDLREIKKQL LLIAGLTRER GLLHSSKWSA ELAFSLPALP LAELQPPPI TEEDAQMDA YTLAKAYFDV KEYDRAAHFL HGCNSKKAYF LYMYSRYLSG EKKKDDETVD SLGPLEKGQV KNEALRELRV ELSKKHQARE LDGFGLYLYG VVLRKLDLVK EAIDVFVEAT HVLPLHWGAW LELCNLITDK EMLKFLSLPD TWMKEFFLAH IYTELQLIEE ALQKYQNLID VGFSKSSYIV SQI AVAYHNI RDIDKALSIF NELRKQDPYR IENMDTFSNL LYVRSMKSEL SYLAHNLCEI DKYRVETCCV IGNYSLRSQ HEKAALYFQR ALKLNPRYLG AWTLMGHEYM EMKNTSAAIQ AYRHAIEV NK RDYRAWYGLG QTYEILKMPF YCLYYYRRAH QLRPNDSRML VALGECYEKL NQLVEAKKCY WRAYAVGDVE KMALVKLAKL HEQLTESEQA AQCYIKYIQD IYSCGEIVEH LEESTAFRYL AQYFKCKLW DEASTCAQKC CAFNDTREG KALLRQILQL RNQGETPTTE VPAPFFLPAS LSANNTPTRR VSPLNLSSVT P
Characteristics:	Human CDC23 full-length ORF (AAH17713, 1 a.a. - 591 a.a.) recombinant protein with GST-tag

Product Details

at N-terminal.

Purification: in vitro wheat germ expression system

Target Details

Target: CDC23

Alternative Name: CDC23 ([CDC23 Products](#))

Background: Full Gene Name: cell division cycle 23 homolog (S. cerevisiae)
Synonyms: APC8

Gene ID: 8697

Pathways: [Protein targeting to Nucleus](#)

Application Details

Application Notes: Optimal working dilution should be determined by the investigator.

Comment: Preparation method: in vitro, wheat germ expression system
Product Quality tested by: 12.5% SDS-PAGE Stained with Coomassie Blue.

Restrictions: For Research Use only

Handling

Buffer: 50 mM Tris-HCl, 10 mM reduced Glutathione, pH =8.0 in the elution buffer.

Handling Advice: Aliquot to avoid repeated freezing and thawing.

Storage: -80 °C

Storage Comment: Best use within three months from the date of receipt of this protein.

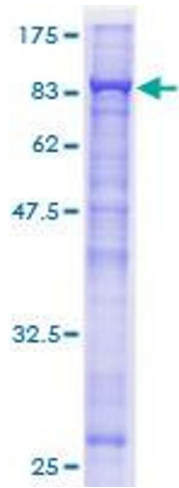


Image 1.