



[Go to Product page](#)

Datasheet for ABIN1348813

CDK19 Protein (AA 367-467) (GST tag)

1 Image

Overview

Quantity:	10 µg
Target:	CDK19
Protein Characteristics:	AA 367-467
Origin:	Human
Source:	Wheat germ
Protein Type:	Recombinant
Purification tag / Conjugate:	This CDK19 protein is labelled with GST tag.
Application:	ELISA, Western Blotting (WB), Antibody Array (AA), Affinity Purification (AP)

Product Details

Purpose:	CDC2L6 (Human) Recombinant Protein (Q01)
Sequence:	KGDKNQQQQQ NQHQQPTAPP QQAAAPPQAP PPQQNSTQTN GTAGGAGAGV GGTGAGLQHS QDSSLNQVPP NKKPRLGPSG ANSGGPVMPS DYQHSSSRLN Y
Characteristics:	Human CDC2L6 partial ORF (AAH37289, 367 a.a. - 467 a.a.) recombinant protein with GST-tag at N-terminal.
Purification:	in vitro wheat germ expression system

Target Details

Target:	CDK19
Alternative Name:	CDC2L6 (CDK19 Products)

Target Details

Background: Full Gene Name: cell division cycle 2-like 6 (CDK8-like)
Synonyms: CDK11,KIAA1028,bA346C16.3

Gene ID: 23097

Pathways: [Regulation of Lipid Metabolism by PPARalpha](#)

Application Details

Application Notes: Optimal working dilution should be determined by the investigator.

Comment: Preparation method: in vitro, wheat germ expression system
Product Quality tested by: 12.5% SDS-PAGE Stained with Coomassie Blue.

Restrictions: For Research Use only

Handling

Buffer: 50 mM Tris-HCl, 10 mM reduced Glutathione, pH =8.0 in the elution buffer.

Handling Advice: Aliquot to avoid repeated freezing and thawing.

Storage: -80 °C

Storage Comment: Best use within three months from the date of receipt of this protein.

Images

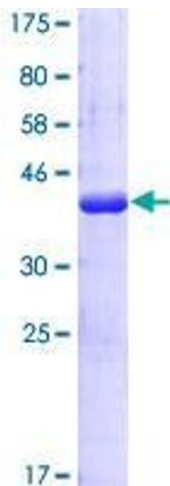


Image 1.