



[Go to Product page](#)

Datasheet for ABIN1348815

CDK19 Protein (AA 1-114) (GST tag)

1 Image

Overview

| | |
|-------------------------------|-------------------------------------------------------------------------------|
| Quantity: | 10 µg |
| Target: | CDK19 |
| Protein Characteristics: | AA 1-114 |
| Origin: | Human |
| Source: | Wheat germ |
| Protein Type: | Recombinant |
| Purification tag / Conjugate: | This CDK19 protein is labelled with GST tag. |
| Application: | ELISA, Western Blotting (WB), Antibody Array (AA), Affinity Purification (AP) |

Product Details

| | |
|------------------|----------------------------------------------------------------------------------------------------------------------------------|
| Purpose: | CDC2L6 (Human) Recombinant Protein (Q02) |
| Sequence: | MDYDFKAKLA AERERVEDLF EYEGCKVGRG TYGHVYKARR KDGKDEKEYA LKQIEGTGIS MSACREIALL RELKHPNVIA LQKVFLSHSD RKVWLLFDYA EHDLWHIIKF HRAS |
| Characteristics: | Human CDC2L6 partial ORF (NP_055891.1, 1 a.a. - 114 a.a.) recombinant protein with GST-tag at N-terminal. |
| Purification: | in vitro wheat germ expression system |

Target Details

| | |
|-------------------|-------------------------------------------|
| Target: | CDK19 |
| Alternative Name: | CDC2L6 (CDK19 Products) |

Target Details

Background: Full Gene Name: cell division cycle 2-like 6 (CDK8-like)
Synonyms: CDK11,KIAA1028,bA346C16.3

Gene ID: 23097

NCBI Accession: [NM_015076](#)

Pathways: [Regulation of Lipid Metabolism by PPARalpha](#)

Application Details

Application Notes: Optimal working dilution should be determined by the investigator.

Comment: Preparation method: in vitro, wheat germ expression system
Product Quality tested by: 12.5% SDS-PAGE Stained with Coomassie Blue.

Restrictions: For Research Use only

Handling

Buffer: 50 mM Tris-HCl, 10 mM reduced Glutathione, pH =8.0 in the elution buffer.

Handling Advice: Aliquot to avoid repeated freezing and thawing.

Storage: -80 °C

Storage Comment: Best use within three months from the date of receipt of this protein.

Images

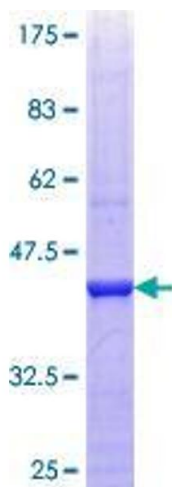


Image 1.