



[Go to Product page](#)

Datasheet for ABIN1348831

CDC42 Protein (AA 1-191) (GST-pstS1)

1 Image

Overview

Quantity:	10 µg
Target:	CDC42
Protein Characteristics:	AA 1-191
Origin:	Human
Source:	Wheat germ
Protein Type:	Recombinant
Purification tag / Conjugate:	This CDC42 protein is labelled with GST-pstS1.
Application:	Western Blotting (WB), ELISA, Antibody Array (AA), Affinity Purification (AP)

Product Details

Purpose:	CDC42 (Human) Recombinant Protein (P03)
Sequence:	MQTIKCVVVG DGAVGKTCLL ISYTTNKFPS EYVPTVFDNY AVTVMIGGEP YTLGLFDTAG QEDYDRLRPL SYPQTDVFLV CFSVVSPSSF ENVKEKWPE ITHHCPKTPF LLVGTQIDLR DDPSTIEKLA KNKQKPITPE TAEKLARDLK AVKYVECSAL TQKGLKNVFD EAILAALEPP EPKKSRRCVL L
Characteristics:	Human CDC42 full-length ORF (AAH03682.1, 1 a.a. - 191 a.a.) recombinant protein with GST tag at N-terminal.
Purification:	in vitro wheat germ expression system

Target Details

Target:	CDC42
---------	-------

Target Details

Alternative Name:	CDC42 (CDC42 Products)
Background:	Full Gene Name: cell division cycle 42 (GTP binding protein, 25 kDa) Synonyms: CDC42Hs,G25K
Gene ID:	998
Pathways:	MAPK Signaling , Microtubule Dynamics , RTK Signaling , WNT Signaling , TCR Signaling , EGFR Signaling Pathway , Regulation of Actin Filament Polymerization , Regulation of Muscle Cell Differentiation , Cell-Cell Junction Organization , Maintenance of Protein Location , Skeletal Muscle Fiber Development , Signaling Events mediated by VEGFR1 and VEGFR2 , EGFR Downregulation , VEGF Signaling

Application Details

Application Notes:	Optimal working dilution should be determined by the investigator.
Comment:	Preparation method: in vitro, wheat germ expression system Product Quality tested by: 12.5% SDS-PAGE Stained with Coomassie Blue
Restrictions:	For Research Use only

Handling

Buffer:	50 mM Tris-HCl, 10 mM reduced Glutathione, pH =8.0 in the elution buffer.
Handling Advice:	Aliquot to avoid repeated freezing and thawing.
Storage:	-80 °C
Storage Comment:	Best use within three months from the date of receipt of this protein.

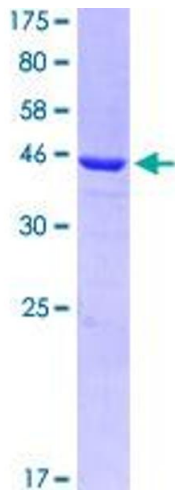


Image 1.