



[Go to Product page](#)

Datasheet for ABIN1348841

CDC42EP1 Protein (AA 1-384) (GST tag)

1 Image

Overview

Quantity:	10 µg
Target:	CDC42EP1
Protein Characteristics:	AA 1-384
Origin:	Human
Source:	Wheat germ
Protein Type:	Recombinant
Purification tag / Conjugate:	This CDC42EP1 protein is labelled with GST tag.
Application:	ELISA, Western Blotting (WB), Antibody Array (AA), Affinity Purification (AP)

Product Details

Purpose:	CDC42EP1 (Human) Recombinant Protein (P01)
Sequence:	MPGPQGGRGA ATMSLGKLSV VGWVSSSQGK RRLTADMISH PLGDFRHTMH VGRGGDVFGD TSFLSNHGGG SGSTHRSPRS FLAKKLQLVR RVGAPRRMA SPPAPSPAPP AISPIIKNAI SLPQLNQAAY DSLVVGKLSF DSSPTSSTDG HSSYGLDSGF CTISRLPRSE KPHDRDRDGS FPSEGLRRS DSLLSFRDL DLGPSLLSEL LGVMSLPEAP AAETPAPAAN PPAPTANPTG PAANPPATTA NPPAPAAATPT GPAANPPAPA ASSTPHGHCP NGVTAGLGPV AEVKSSPVGG GPRGPAGPAL GRHWGAGWDG GHHYEMDAR QERVEVLPQA RASWESLDEE WRAPQAGSRT PVPSTVQANT FEFADAEEDD EVKV
Characteristics:	Human CDC42EP1 full-length ORF (AAH09356, 1 a.a. - 384 a.a.) recombinant protein with GST-tag at N-terminal.
Purification:	in vitro wheat germ expression system

Target Details

Target:	CDC42EP1
Alternative Name:	CDC42EP1 (CDC42EP1 Products)
Background:	Full Gene Name: CDC42 effector protein (Rho GTPase binding) 1 Synonyms: BORG5,CEP1,MGC15316,MSE55
Gene ID:	11135

Application Details

Application Notes:	Optimal working dilution should be determined by the investigator.
Comment:	Preparation method: in vitro, wheat germ expression system Product Quality tested by: 12.5% SDS-PAGE Stained with Coomassie Blue.
Restrictions:	For Research Use only

Handling

Buffer:	50 mM Tris-HCl, 10 mM reduced Glutathione, pH =8.0 in the elution buffer.
Handling Advice:	Aliquot to avoid repeated freezing and thawing.
Storage:	-80 °C
Storage Comment:	Best use within three months from the date of receipt of this protein.

Images

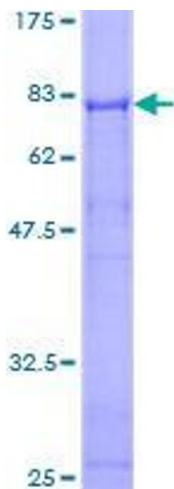


Image 1.