



Datasheet for ABIN1348858

CDC45 Protein (AA 477-566) (GST tag)



[Go to Product page](#)

1 Image

Overview

Quantity:	10 µg
Target:	CDC45
Protein Characteristics:	AA 477-566
Origin:	Human
Source:	Wheat germ
Protein Type:	Recombinant
Purification tag / Conjugate:	This CDC45 protein is labelled with GST tag.
Application:	ELISA, Western Blotting (WB), Antibody Array (AA), Affinity Purification (AP)

Product Details

Purpose:	CDC45L (Human) Recombinant Protein (Q01)
Sequence:	FVCSTKNRRC KLLPLVMAAP LSMEHGTVTV VGIPPETDSS DRKNFFGRAF EKAAESTSSR MLHNHFDLSV IELKAEDRSK FLDALISLLS
Characteristics:	Human CDC45L partial ORF (NP_003495, 477 a.a. - 566 a.a.) recombinant protein with GST-tag at N-terminal.
Purification:	in vitro wheat germ expression system

Target Details

Target:	CDC45
Alternative Name:	CDC45L (CDC45 Products)

Target Details

Background:	Full Gene Name: CDC45 cell division cycle 45-like (<i>S. cerevisiae</i>) Synonyms: CDC45,CDC45L2,PORC-PI-1
Gene ID:	8318
NCBI Accession:	NM_003504
Pathways:	Mitotic G1-G1/S Phases , DNA Replication , Synthesis of DNA

Application Details

Application Notes:	Optimal working dilution should be determined by the investigator.
Comment:	Preparation method: in vitro, wheat germ expression system Product Quality tested by: 12.5% SDS-PAGE Stained with Coomassie Blue.
Restrictions:	For Research Use only

Handling

Buffer:	50 mM Tris-HCl, 10 mM reduced Glutathione, pH =8.0 in the elution buffer.
Handling Advice:	Aliquot to avoid repeated freezing and thawing.
Storage:	-80 °C
Storage Comment:	Best use within three months from the date of receipt of this protein.

Images

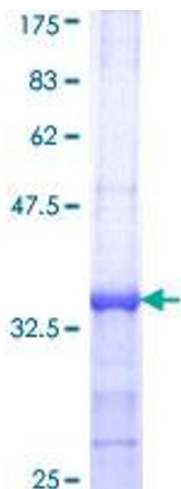


Image 1.