



[Go to Product page](#)

Datasheet for ABIN1348864
CDC6 Protein (AA 1-560) (GST tag)

1 Image

Overview

Quantity:	25 µg
Target:	CDC6
Protein Characteristics:	AA 1-560
Origin:	Human
Source:	Wheat germ
Protein Type:	Recombinant
Purification tag / Conjugate:	This CDC6 protein is labelled with GST tag.
Application:	ELISA, Western Blotting (WB), Antibody Array (AA), Affinity Purification (AP)

Product Details

Purpose:	CDC6 (Human) Recombinant Protein (P01)
Sequence:	MPQTRSQAQA TISFPKRKLS RALNKAKNSS DAKLEPTNVQ TVTCSPRVKA LPLSPRKRLG DDNLCNTPHL PPCSPPKQGK KENGPPHSHT LKGRRLVFDN QLTIKSPSKR ELAKVHQNKI LSSVRKSQEI TTNSEQRCPL KKEACVRLF KQEGTCYQQA KLVNLTAVPD RLPAREREM VIRNFLREHI CGKKAGSLYL SGAPGTGKTA CLSRILQDLK KELKGFKTIM LNCMSLR TAQ AVFPAIAQEI CQEEVSRPAG KDMMRKLEKH MTAEKGPMIV LVLDEMDQLD SKGQD VLYTL FEWPWLSNSH LVLIGIANTL DLTDRLPRL QAREKCKPQL LNFPPYTRNQ IVTILQDRLN QVSRDQVLDN AAVQFCARKV SAVSGDVRKA LDVCRRAIEI VESDVK SQTI LKPLSECKSP SEPLIPKRVG LIHISQVISE IDGNRMTLSQ EGAQDSFPLQ QKILVCSLML LIRQLKIKEV TLGKLYEAYS KVCRKQVAA VDQSECLSLS GLLEARGILG LKRNETRLT KVFFKIEEKE IEHALKDKAL IGNILATGLP
Characteristics:	Human CDC6 full-length ORF (AAH25232.1, 1 a.a. - 560 a.a.) recombinant protein with GST-tag

Product Details

at N-terminal.

Purification: in vitro wheat germ expression system

Target Details

Target: CDC6

Alternative Name: CDC6 ([CDC6 Products](#))

Background: Full Gene Name: cell division cycle 6 homolog (*S. cerevisiae*)
Synonyms: CDC18L,HsCDC18,HsCDC6

Gene ID: 990

Pathways: [DNA Replication](#), [Synthesis of DNA](#)

Application Details

Application Notes: Optimal working dilution should be determined by the investigator.

Comment: Preparation method: in vitro, wheat germ expression system
Product Quality tested by: 12.5% SDS-PAGE Stained with Coomassie Blue.

Restrictions: For Research Use only

Handling

Buffer: 50 mM Tris-HCl, 10 mM reduced Glutathione, pH =8.0 in the elution buffer.

Handling Advice: Aliquot to avoid repeated freezing and thawing.

Storage: -80 °C

Storage Comment: Best use within three months from the date of receipt of this protein.

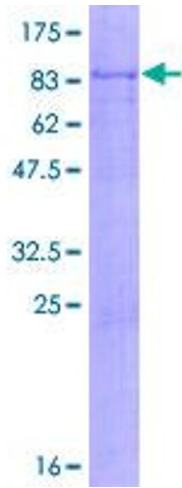


Image 1.