



[Go to Product page](#)

Datasheet for ABIN1348867

CDC7 Protein (AA 201-300) (GST tag)

1 Image

Overview

Quantity:	10 µg
Target:	CDC7
Protein Characteristics:	AA 201-300
Origin:	Human
Source:	Wheat germ
Protein Type:	Recombinant
Purification tag / Conjugate:	This CDC7 protein is labelled with GST tag.
Application:	Western Blotting (WB), ELISA, Antibody Array (AA), Affinity Purification (AP)

Product Details

Purpose:	CDC7 (Human) Recombinant Protein (Q01)
Sequence:	QGTHDTKIEL LKFVQSEAQQ ERCSQNKSHI ITGNKIPLSG PVPKELDQQS TTKASVKRPY TNAQIQIKQG KDGKEGSVGL SVQRSVFGER NFNIHSSISH
Characteristics:	Human CDC7 partial ORF (NP_003494, 201 a.a. - 300 a.a.) recombinant protein with GST-tag at N-terminal.
Purification:	in vitro wheat germ expression system

Target Details

Target:	CDC7
Alternative Name:	CDC7 (CDC7 Products)

Target Details

Background:	Full Gene Name: cell division cycle 7 homolog (<i>S. cerevisiae</i>) Synonyms: CDC7L1,HsCDC7,Hsk1,MGC117361,MGC126237,MGC126238,huCDC7
Gene ID:	8317
NCBI Accession:	NM_003503
Pathways:	Mitotic G1-G1/S Phases, DNA Replication

Application Details

Application Notes:	Optimal working dilution should be determined by the investigator.
Comment:	Preparation method: in vitro, wheat germ expression system Product Quality tested by: 12.5% SDS-PAGE Stained with Coomassie Blue.
Restrictions:	For Research Use only

Handling

Buffer:	50 mM Tris-HCl, 10 mM reduced Glutathione, pH =8.0 in the elution buffer.
Handling Advice:	Aliquot to avoid repeated freezing and thawing.
Storage:	-80 °C
Storage Comment:	Best use within three months from the date of receipt of this protein.

Images

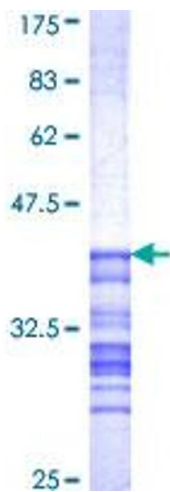


Image 1.