



[Go to Product page](#)

Datasheet for ABIN1348879

CDCA8 Protein (AA 1-280) (GST tag)

1 Image

Overview

Quantity:	25 µg
Target:	CDCA8
Protein Characteristics:	AA 1-280
Origin:	Human
Source:	Wheat germ
Protein Type:	Recombinant
Purification tag / Conjugate:	This CDCA8 protein is labelled with GST tag.
Application:	ELISA, Western Blotting (WB), Antibody Array (AA), Affinity Purification (AP)

Product Details

Purpose:	CDCA8 (Human) Recombinant Protein (P01)
Sequence:	MAPRKGSSRV ANTNSLRRRK LASFLKDFDR EVEIRIKQIE SDRQNLLKEV DNLYNIEILR LPKALREMNW LDYFALGGNK QALEEAATAD LDITEINKLT AEAQTPLKS AKTRKVIQVD EMIVEEEEEE ENERKNLQTA RVKRCPPSKK RTQSIQGGK GKRSSRANTV TPAVGRLEVS MVKPTPGLTP RFDSRVFKTP GLRTPAAGER IYNISGNGSP LADSKEIFLT VPVGGGESLR LLASDLQRHS IAQLDPEALG NIKKLSNRLA QICSSMRTHK
Characteristics:	Human CDCA8 full-length ORF (AAH16944.1, 1 a.a. - 280 a.a.) recombinant protein with GST-tag at N-terminal.
Purification:	in vitro wheat germ expression system

Target Details

Target:	CDCA8
Alternative Name:	CDCA8 (CDCA8 Products)
Background:	Full Gene Name: cell division cycle associated 8 Synonyms: BOR,BOREALIN,FLJ10468,FLJ12042
Gene ID:	55143
Pathways:	Cell Division Cycle, M Phase

Application Details

Application Notes:	Optimal working dilution should be determined by the investigator.
Comment:	Preparation method: in vitro, wheat germ expression system Product Quality tested by: 12.5% SDS-PAGE Stained with Coomassie Blue.
Restrictions:	For Research Use only

Handling

Buffer:	50 mM Tris-HCl, 10 mM reduced Glutathione, pH =8.0 in the elution buffer.
Handling Advice:	Aliquot to avoid repeated freezing and thawing.
Storage:	-80 °C
Storage Comment:	Best use within three months from the date of receipt of this protein.

Images

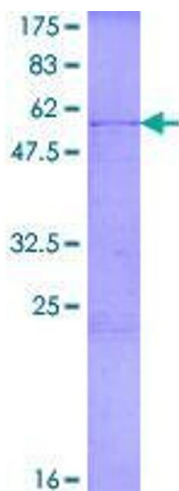


Image 1.