



Datasheet for ABIN1348893

## Cadherin-16 Protein (CDH16) (AA 1-829) (GST tag)



[Go to Product page](#)

### 1 Image

#### Overview

Quantity:	10 µg
Target:	Cadherin-16 (CDH16)
Protein Characteristics:	AA 1-829
Origin:	Human
Source:	Wheat germ
Protein Type:	Recombinant
Purification tag / Conjugate:	This Cadherin-16 protein is labelled with GST tag.
Application:	Western Blotting (WB), ELISA, Antibody Array (AA), Affinity Purification (AP)

#### Product Details

Purpose:	CDH16 (Human) Recombinant Protein (P01)
Sequence:	MVPAWLWLLC VSVQALPKA QPAELSVEVP ENYGGNFPLY LTKLPLPREG AEGQIVLSGD SGKATEGPFA MDPDSGFLV TRALDREEQA EYQLQVTLEM QDGHVLWGPQ PVLVHVVDEN DQVPHFSQAI YRARLSRGTR PGIPFLFLEA SDRDEPGTAN SDLRFHILSQ APAQSPDMF QLEPRLGALA LSPKGGSTSLD HALERTYQLL VQVKDMGDQA SGHQATATVE VSIIESTWVS LEPIHLAENL KVLPHHMAQ VHWSSGDVHY HLESHPPGPF EVNAEGNLYV TRELDREAQA EYLLQVRAQN SHGEDYAAPL ELHVLVMDEN DNVPICPPRD PTVSIPELSP PGTEVTRLSA EDADAPGSPN SHVVYQLLSP EPEDGVEGRA FQVDPTSGSV TLGVLPLRAG QNILLVLAM DLAGAEGGFS STCEVEVAVT DINDHAPEFI TSQIGPISLP EDVEPGTLVA MLTAIDADLE PAFRLMDFAI ERGDTEGTFG LDWEPDSGHV RLRLCKNLSY EAAPSHEVVV VQSVAKLVG PGPGGATAT VTVLVERVMP PPKLDQESYE ASVPISAPAG SFLLLTIQPSD PISRTLRFSL VNDSEGWLCI EKFSGEVHTA QSLQGAQPGD TYTVLVEAQD TDEPRLSASA PLVIHFLKAP

## Product Details

---

PAPALTLAPV PSQYLCTPRQ DHGLIVSGPS KDPDLASGHG PYSFTLGPNP TVQRDWRLQT  
LNGSHAYLTL ALHWVEPREH IIPVVVSHNA QMWQLLVRVI VCRCNVEGQC MRKVGRMKGM  
PTKLSAVGIL VGTLVAIGIF LILIFTHWTM SRKKDPDQPA DSVPLKATV

Characteristics: Human CDH16 full-length ORF ( NP\_004053.1, 1 a.a. - 829 a.a.) recombinant protein with GST-tag at N-terminal.

Purification: in vitro wheat germ expression system

## Target Details

---

Target: Cadherin-16 (CDH16)

Alternative Name: CDH16 ([CDH16 Products](#))

Background: Full Gene Name: cadherin 16, KSP-cadherin  
Synonyms:

Gene ID: 1014

NCBI Accession: [NM\\_004062](#)

## Application Details

---

Application Notes: Optimal working dilution should be determined by the investigator.

Comment: Preparation method: in vitro, wheat germ expression system  
Product Quality tested by: 12.5% SDS-PAGE Stained with Coomassie Blue.

Restrictions: For Research Use only

## Handling

---

Buffer: 50 mM Tris-HCl, 10 mM reduced Glutathione, pH =8.0 in the elution buffer.

Handling Advice: Aliquot to avoid repeated freezing and thawing.

Storage: -80 °C

Storage Comment: Best use within three months from the date of receipt of this protein.

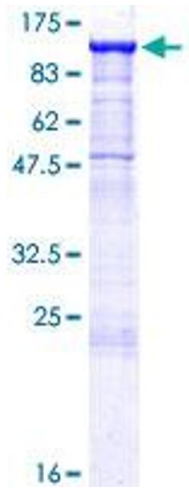


Image 1.