



[Go to Product page](#)

Datasheet for ABIN1348895  
**LI Cadherin Protein (AA 24-131) (GST tag)**

1 Image

Overview

Quantity:	10 µg
Target:	LI Cadherin
Protein Characteristics:	AA 24-131
Origin:	Human
Source:	Wheat germ
Protein Type:	Recombinant
Purification tag / Conjugate:	This LI Cadherin protein is labelled with GST tag.
Application:	Western Blotting (WB), ELISA, Affinity Purification (AP), Antibody Array (AA)

Product Details

Purpose:	CDH17 (Human) Recombinant Protein (Q01)
Sequence:	EGKFSGPLKP MTFSIYEGQE PSQIIFQFKA NPPAVTFELT GETDNIFVIE REGLLYYNRA LDRETRSTHN LQVAALDANG IIVEGPVPIT IEVKDINDNR PTFLLQSKY
Characteristics:	Human CDH17 partial ORF ( NP_004054, 24 a.a. - 131 a.a.) recombinant protein with GST-tag at N-terminal.
Purification:	in vitro wheat germ expression system

Target Details

Target:	LI Cadherin
Alternative Name:	CDH17 ( <a href="#">LI Cadherin Products</a> )

## Target Details

Background:	Full Gene Name: cadherin 17, LI cadherin (liver-intestine) Synonyms: CDH16,FLJ26931,HPT-1,HPT1,MGC138218,MGC142024
Gene ID:	1015
NCBI Accession:	<a href="#">NM_004063</a>

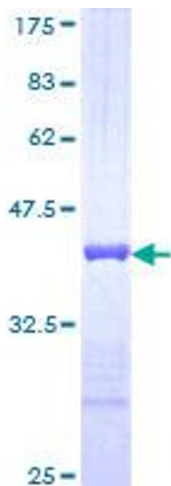
## Application Details

Application Notes:	Optimal working dilution should be determined by the investigator.
Comment:	Preparation method: in vitro, wheat germ expression system Product Quality tested by: 12.5% SDS-PAGE Stained with Coomassie Blue.
Restrictions:	For Research Use only

## Handling

Buffer:	50 mM Tris-HCl, 10 mM reduced Glutathione, pH =8.0 in the elution buffer.
Handling Advice:	Aliquot to avoid repeated freezing and thawing.
Storage:	-80 °C
Storage Comment:	Best use within three months from the date of receipt of this protein.

## Images



**Image 1.**