



[Go to Product page](#)

Datasheet for ABIN1348906

## N-Cadherin Protein (AA 807-906) (GST tag)

### 1 Image

#### Overview

|                               |   |
|-------------------------------|---|
| Quantity:                     | 10 µg   |
| Target:                       | N-Cadherin (CDH2)   |
| Protein Characteristics:      | AA 807-906  |
| Origin:                       | Human   |
| Source:                       | Wheat germ  |
| Protein Type:                 | Recombinant   |
| Purification tag / Conjugate: | This N-Cadherin protein is labelled with GST tag.                             |
| Application:                  | Western Blotting (WB), ELISA, Antibody Array (AA), Affinity Purification (AP) |

#### Product Details

|                  |   |
|------------------|---|
| Purpose:         | CDH2 (Human) Recombinant Protein (Q01)  |
| Sequence:        | RRMDERPIHA EPQYPVRSAA PHPGDIGDFI NEGLKAADND PTAPPYDSLL VFDYEGSGST<br>AGSLSSLNSS SSGGEQDYDY LNDWGPFRFKK LADMYGGGDD |
| Characteristics: | Human CDH2 partial ORF ( NP_001783, 807 a.a. - 906 a.a.) recombinant protein with GST-tag at N-terminal.          |
| Purification:    | in vitro wheat germ expression system   |

#### Target Details

|                   |  |
|-------------------|--|
| Target:           | N-Cadherin (CDH2)                      |
| Alternative Name: | CDH2 ( <a href="#">CDH2 Products</a> ) |

## Target Details

|                 |   |
|-----------------|---|
| Background:     | Full Gene Name: cadherin 2, type 1, N-cadherin (neuronal)<br>Synonyms: CD325,CDHN,CDw325,NCAD   |
| Gene ID:        | 1000  |
| NCBI Accession: | <a href="#">NM_001792</a>   |
| Pathways:       | <a href="#">Regulation of Muscle Cell Differentiation</a> , <a href="#">Cell-Cell Junction Organization</a> , <a href="#">Synaptic Membrane</a> |

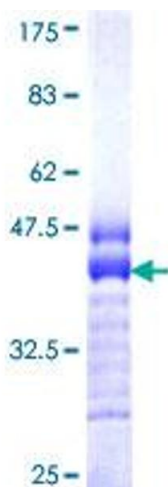
## Application Details

|                    |  |
|--------------------|--|
| Application Notes: | Optimal working dilution should be determined by the investigator.   |
| Comment:           | Preparation method: in vitro, wheat germ expression system<br>Product Quality tested by: 12.5% SDS-PAGE Stained with Coomassie Blue. |
| Restrictions:      | For Research Use only  |

## Handling

|                  |   |
|------------------|---|
| Buffer:          | 50 mM Tris-HCl, 10 mM reduced Glutathione, pH =8.0 in the elution buffer. |
| Handling Advice: | Aliquot to avoid repeated freezing and thawing.                           |
| Storage:         | -80 °C  |
| Storage Comment: | Best use within three months from the date of receipt of this protein.    |

## Images



**Image 1.**