



[Go to Product page](#)

Datasheet for ABIN1348912

CDH26 Protein (AA 1-165) (GST tag)

1 Image

Overview

Quantity:	10 µg
Target:	CDH26
Protein Characteristics:	AA 1-165
Origin:	Human
Source:	Wheat germ
Protein Type:	Recombinant
Purification tag / Conjugate:	This CDH26 protein is labelled with GST tag.
Application:	Western Blotting (WB), ELISA, Antibody Array (AA), Affinity Purification (AP)

Product Details

Purpose:	CDH26 (Human) Recombinant Protein (P01)
Sequence:	MKPLIWTWSD VEGQRPALLI CTAAAGPTQG VKDLEEVPPS AASQSAQARC ALGSWGYGKP FEPRSVKNIH STPAYPDATM HRQLLAPVEG RMAETLNQKL HVANVLEDDP GYLPHVYSEE GECGGAPSLSLASLEQELQ PDLLDSLGSK ATPFEEIYSE SGVPS
Characteristics:	Human CDH26 full-length ORF (NP_068582.2, 1 a.a. - 165 a.a.) recombinant protein with GST-tag at N-terminal.
Purification:	in vitro wheat germ expression system

Target Details

Target:	CDH26
Alternative Name:	CDH26 (CDH26 Products)

Target Details

Background: Full Gene Name: cadherin-like 26
Synonyms: VR20

Gene ID: 60437

NCBI Accession: [NM_021810](#)

Application Details

Application Notes: Optimal working dilution should be determined by the investigator.

Comment: Preparation method: in vitro, wheat germ expression system
Product Quality tested by: 12.5% SDS-PAGE Stained with Coomassie Blue.

Restrictions: For Research Use only

Handling

Buffer: 50 mM Tris-HCl, 10 mM reduced Glutathione, pH =8.0 in the elution buffer.

Handling Advice: Aliquot to avoid repeated freezing and thawing.

Storage: -80 °C

Storage Comment: Best use within three months from the date of receipt of this protein.

Images

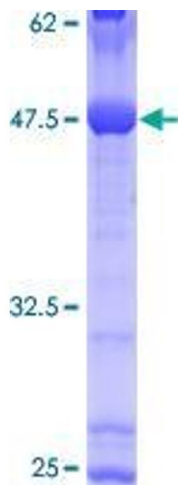


Image 1.