



[Go to Product page](#)

Datasheet for ABIN1348969

## CDK5RAP3 Protein (AA 1-506) (GST tag)

### 1 Image

#### Overview

Quantity:	10 µg
Target:	CDK5RAP3
Protein Characteristics:	AA 1-506
Origin:	Human
Source:	Wheat germ
Protein Type:	Recombinant
Purification tag / Conjugate:	This CDK5RAP3 protein is labelled with GST tag.
Application:	ELISA, Western Blotting (WB), Antibody Array (AA), Affinity Purification (AP)

#### Product Details

Purpose:	CDK5RAP3 (Human) Recombinant Protein (P01)
Sequence:	MEDHQHVPID IQTSKLLDWL VDRRHCSLKW QSLVLTIREK INAAIQDMPE SEEIAQLLSG SYIHYFHCLR ILDLLKGTEA STKNIFGRYS SQRMKDWQEI IALYEKDNITY LEVELSLLVR NVNYEIPSLK KQIAKCQQLQ QEYSRKEEEC QAGAAEMREQ FYHSCKQYGI TGENVRGELL ALVKDLPSQL AEIGAAAQQS LGEAIDVYQA SVGFVCSPT EQVLPMLRFV QKRGNSTVYE WRTGTEPSVV ERPHLEELPE QVAEDAIDWG DFGVEAVSEG TDSGISAEAA GIDWGIFPES DSKDPGGDGI DWGDDAVALQ ITVLEAGTQA PEGVARGPDA LTLLEYTETR NQFLDELMEL EIFLAQRAVE LSEEADVLSV SQFQLAPAIL QGQTKEKMVT MVSVLEDLIG KLTSLLQLHL FMILASPRYV DRVTEFLQKQ LKQSLLALK KELMVQKQOE ALEEQAALP KLDLLEKTK ELQKLIEDI SKRYSGRPVN LMGTSL
Characteristics:	Human CDK5RAP3 full-length ORF ( AAH09957, 1 a.a. - 506 a.a.) recombinant protein with GST-tag at N-terminal.

## Product Details

---

Purification: in vitro wheat germ expression system

## Target Details

---

Target: CDK5RAP3

Alternative Name: CDK5RAP3 ([CDK5RAP3 Products](#))

Background: Full Gene Name: CDK5 regulatory subunit associated protein 3  
Synonyms: C53,HSF-27,IC53,LZAP,MST016,OK/SW-cl.114

Gene ID: 80279

## Application Details

---

Application Notes: Optimal working dilution should be determined by the investigator.

Comment: Preparation method: in vitro, wheat germ expression system  
Product Quality tested by: 12.5% SDS-PAGE Stained with Coomassie Blue.

Restrictions: For Research Use only

## Handling

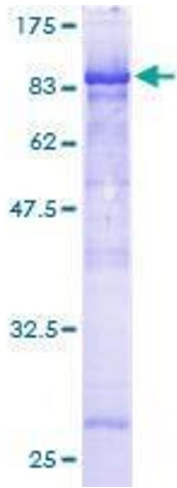
---

Buffer: 50 mM Tris-HCl, 10 mM reduced Glutathione, pH =8.0 in the elution buffer.

Handling Advice: Aliquot to avoid repeated freezing and thawing.

Storage: -80 °C

Storage Comment: Best use within three months from the date of receipt of this protein.



**Image 1.**