



[Go to Product page](#)

Datasheet for ABIN1349005

p21 Protein (AA 1-164) (GST tag)

1 Image

Overview

| | |
|-------------------------------|---|
| Quantity: | 10 µg |
| Target: | p21 (CDKN1A) |
| Protein Characteristics: | AA 1-164 |
| Origin: | Human |
| Source: | Wheat germ |
| Protein Type: | Recombinant |
| Purification tag / Conjugate: | This p21 protein is labelled with GST tag. |
| Application: | Western Blotting (WB), ELISA, Antibody Array (AA), Affinity Purification (AP) |

Product Details

| | |
|------------------|---|
| Purpose: | CDKN1A (Human) Recombinant Protein (P02) |
| Sequence: | MSEPAGDVRQ NPCGSKACRR LFGPVDSEQL SRDCDALMAG CIQEARERWN FDFVTETPLE GDFAWERVRG LGLPKLYLPT GPRRGRDELG GGRRPGTSPA LLQGTAEDDH VDL SLSCTLV PRSGEQAEGS PGGPGDSQGR KRRQTSMTDF YHSKRRLIFS KRKP |
| Characteristics: | Human CDKN1A full-length ORF (NP_000380.1, 1 a.a. - 164 a.a.) recombinant protein with GST-tag at N-terminal. |
| Purification: | in vitro wheat germ expression system |

Target Details

| | |
|-------------------|--|
| Target: | p21 (CDKN1A) |
| Alternative Name: | CDKN1A (CDKN1A Products) |

Target Details

| | |
|-----------------|---|
| Background: | Full Gene Name: cyclin-dependent kinase inhibitor 1A (p21, Cip1) Synonyms: CAP20,CDKN1,CIP1,MDA-6,P21,SDI1,WAF1,p21CIP1 |
| Gene ID: | 1026 |
| NCBI Accession: | NM_000389 |
| Pathways: | p53 Signaling , PI3K-Akt Signaling , Cell Division Cycle , AMPK Signaling , Fc-epsilon Receptor Signaling Pathway , EGFR Signaling Pathway , Neurotrophin Signaling Pathway , Mitotic G1-G1/S Phases , DNA Replication , Hepatitis C , Synthesis of DNA , Autophagy |

Application Details

| | |
|--------------------|--|
| Application Notes: | Optimal working dilution should be determined by the investigator. |
| Comment: | Preparation method: in vitro, wheat germ expression system Product Quality tested by: 12.5% SDS-PAGE Stained with Coomassie Blue. |
| Restrictions: | For Research Use only |

Handling

| | |
|------------------|---|
| Buffer: | 50 mM Tris-HCl, 10 mM reduced Glutathione, pH =8.0 in the elution buffer. |
| Handling Advice: | Aliquot to avoid repeated freezing and thawing. |
| Storage: | -80 °C |
| Storage Comment: | Best use within three months from the date of receipt of this protein. |

Images

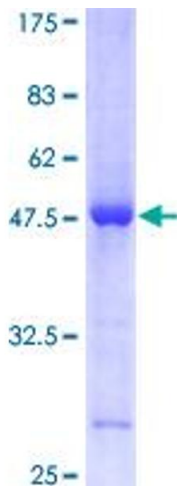


Image 1.