

Datasheet for ABIN1349039
CDR2 Protein (AA 296-404) (GST tag)



[Go to Product page](#)

1 Image

Overview

Quantity:	10 µg
Target:	CDR2
Protein Characteristics:	AA 296-404
Origin:	Human
Source:	Wheat germ
Protein Type:	Recombinant
Purification tag / Conjugate:	This CDR2 protein is labelled with GST tag.
Application:	ELISA, Western Blotting (WB), Antibody Array (AA), Affinity Purification (AP)

Product Details

Purpose:	CDR2 (Human) Recombinant Protein (Q01)
Sequence:	LTPVESHKRP LKRSSSETIL SSLAGSDIVK GHEETCIRRA KAVKQRGISL LHEVDTQYSA LKVKYEELLK KCQEEQDSLS HKAVQTSRAA AKDLTGVAQ SEPVASGWE
Characteristics:	Human CDR2 partial ORF (NP_001793, 296 a.a. - 404 a.a.) recombinant protein with GST-tag at N-terminal.
Purification:	in vitro wheat germ expression system

Target Details

Target:	CDR2
Alternative Name:	CDR2 (CDR2 Products)

Target Details

Background:	Full Gene Name: cerebellar degeneration-related protein 2, 62 kDa Synonyms: CDR62,Yo
Gene ID:	1039
NCBI Accession:	NM_001802

Application Details

Application Notes:	Optimal working dilution should be determined by the investigator.
Comment:	Preparation method: in vitro, wheat germ expression system Product Quality tested by: 12.5% SDS-PAGE Stained with Coomassie Blue.
Restrictions:	For Research Use only

Handling

Buffer:	50 mM Tris-HCl, 10 mM reduced Glutathione, pH =8.0 in the elution buffer.
Handling Advice:	Aliquot to avoid repeated freezing and thawing.
Storage:	-80 °C
Storage Comment:	Best use within three months from the date of receipt of this protein.

Images

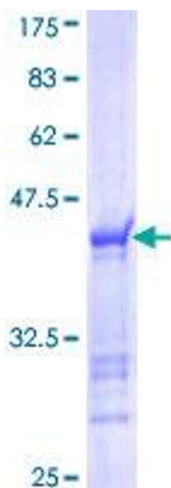


Image 1.