



[Go to Product page](#)

Datasheet for ABIN1349041

CDR2L Protein (AA 1-459) (GST tag)

1 Image

Overview

| | |
|-------------------------------|---|
| Quantity: | 25 µg |
| Target: | CDR2L |
| Protein Characteristics: | AA 1-459 |
| Origin: | Human |
| Source: | Wheat germ |
| Protein Type: | Recombinant |
| Purification tag / Conjugate: | This CDR2L protein is labelled with GST tag. |
| Application: | ELISA, Western Blotting (WB), Antibody Array (AA), Affinity Purification (AP) |

Product Details

| | |
|------------------|--|
| Purpose: | CDR2L (Human) Recombinant Protein (P01) |
| Sequence: | MEDFSAEEEE SWYDQQDLEQ DLHLAAELGK TLLERNKELE GSLQQMYSTN EEQVQEIEYL TKQLDTLRHV NEQHAKVVEQ LDLTARDLEL TNHRLVLESK AAQQKIHGLT ETIERLQAQV EELQAQVEQL RGLEQLRVLR EKRERRRTIH TFPCLKELCT SPRCKDAFRL HSSSLELGPR PLEQENERLQ TLVGALRSQV SQERQRKERA EREYTAVLQE YSELERQLCE MEACRLRVQE LEAELLELQQ MKQAKTYLLG PDDHLAEALL APLTQAPEAD DPQPGRGDDL GAQDGVSSPA ASPGHVVRKS CSDTALNAIV AKDPASRHAG NLT LHANSVR KRGMSILREV DEQYHALLEK YEELLSKCRQ HGAGVRHAGV QTSRPISRDS SWRDLRGGEE GGQEVKAGEK SLSQHVEAVD KRLEQSQPEY KALFKEIFSR IQKTKADINA TKVKTHSSK |
| Characteristics: | Human CDR2L full-length ORF (ABZ92326.1, 1 a.a. - 459 a.a.) recombinant protein with GST tag at N-terminal. |

Product Details

Purification: in vitro wheat germ expression system

Target Details

Target: CDR2L

Alternative Name: CDR2L ([CDR2L Products](#))

Background: Gene: cerebellar degeneration-related protein 2-like
Synonyms: HUMPPA

Gene ID: 30850

Application Details

Application Notes: Optimal working dilution should be determined by the investigator.

Restrictions: For Research Use only

Handling

Buffer: 50 mM Tris-HCl, 10 mM reduced Glutathione, pH =8.0 in the elution buffer.

Handling Advice: Aliquot to avoid repeated freezing and thawing.

Storage: -80 °C

Storage Comment: Best use within three months from the date of receipt of this protein.

Images

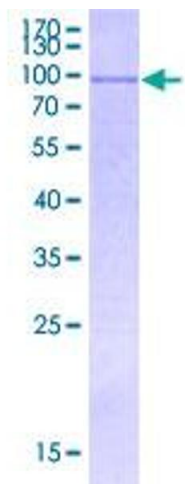


Image 1.