



Datasheet for ABIN1349077

CEACAM6 Protein (AA 1-344) (GST tag)



[Go to Product page](#)

1 Image

Overview

Quantity:	10 µg
Target:	CEACAM6
Protein Characteristics:	AA 1-344
Origin:	Human
Source:	Wheat germ
Protein Type:	Recombinant
Purification tag / Conjugate:	This CEACAM6 protein is labelled with GST tag.
Application:	Western Blotting (WB), ELISA, Antibody Array (AA), Affinity Purification (AP)

Product Details

Purpose:	CEACAM6 (Human) Recombinant Protein (P01)
Sequence:	MGPPSAPPCR LHVPWKEVLL TASLLTFWNP PTTAKLTIES TPFNVAEGKE VLLLAHNLPQ NRIGYSWYKG ERVDGNSLIV GYVIGTQQAT PGPAYSGRET IYPNASLLIQ NVTQNDTGFY TLQVIKSDLV NEEATGQFHV YPELPKPSIS SNNSNPVEDK DAVAFTCEPE VQNTTYLWWW NGQSLPVSPPR LQLSNGNMTL TLLSVKRND A GSYECEIQNP ASANRSDPVT LNVLYGPDVP TISPSKANYR PGENLNLSCH AASNPPAQYS WFINGTFQQS TQELFIPNIT VNNSGSYMCQ AHNSATGLNR TTVTMITVSG SAPVLSAVAT VGITIGVLAR VALI
Characteristics:	Human CEACAM6 full-length ORF (AAH05008.1, 1 a.a. - 344 a.a.) recombinant protein with GST-tag at N-terminal.
Purification:	in vitro wheat germ expression system

Target Details

Target:	CEACAM6
Alternative Name:	CEACAM6 (CEACAM6 Products)
Background:	Full Gene Name: carcinoembryonic antigen-related cell adhesion molecule 6 (non-specific cross reacting antigen) Synonyms: CD66c,CEAL,NCA
Gene ID:	4680

Application Details

Application Notes:	Optimal working dilution should be determined by the investigator.
Comment:	Preparation method: in vitro, wheat germ expression system Product Quality tested by: 12.5% SDS-PAGE Stained with Coomassie Blue.
Restrictions:	For Research Use only

Handling

Buffer:	50 mM Tris-HCl, 10 mM reduced Glutathione, pH =8.0 in the elution buffer.
Handling Advice:	Aliquot to avoid repeated freezing and thawing.
Storage:	-80 °C
Storage Comment:	Best use within three months from the date of receipt of this protein.

Images

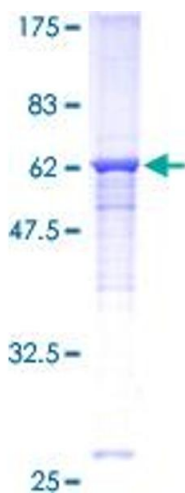


Image 1.