

Datasheet for ABIN1349079

CEACAM6 Protein (AA 156-265) (GST tag)



[Go to Product page](#)

1 Image

Overview

Quantity:	10 µg
Target:	CEACAM6
Protein Characteristics:	AA 156-265
Origin:	Human
Source:	Wheat germ
Protein Type:	Recombinant
Purification tag / Conjugate:	This CEACAM6 protein is labelled with GST tag.
Application:	Western Blotting (WB), ELISA, Antibody Array (AA), Affinity Purification (AP)

Product Details

Purpose:	CEACAM6 (Human) Recombinant Protein (Q01)
Sequence:	PVEDKDAVAF TCEPEVQNTT YLWWVNGQSL PVSPRLQLSN GNMTLTLLSV KRNDAGSYEC EIQNPASANR SDPVTLNVLY GPDVPTISPS KANYRPGENL NLSCHAASNP
Characteristics:	Human CEACAM6 partial ORF (NP_002474.3, 156 a.a. - 265 a.a.) recombinant protein with GST-tag at N-terminal.
Purification:	in vitro wheat germ expression system

Target Details

Target:	CEACAM6
Alternative Name:	CEACAM6 (CEACAM6 Products)

Target Details

Background:	Full Gene Name: carcinoembryonic antigen-related cell adhesion molecule 6 (non-specific cross reacting antigen) Synonyms: CD66c,CEAL,NCA
Gene ID:	4680
NCBI Accession:	NM_002483

Application Details

Application Notes:	Optimal working dilution should be determined by the investigator.
Comment:	Preparation method: in vitro, wheat germ expression system Product Quality tested by: 12.5% SDS-PAGE Stained with Coomassie Blue.
Restrictions:	For Research Use only

Handling

Buffer:	50 mM Tris-HCl, 10 mM reduced Glutathione, pH =8.0 in the elution buffer.
Handling Advice:	Aliquot to avoid repeated freezing and thawing.
Storage:	-80 °C
Storage Comment:	Best use within three months from the date of receipt of this protein.

Images

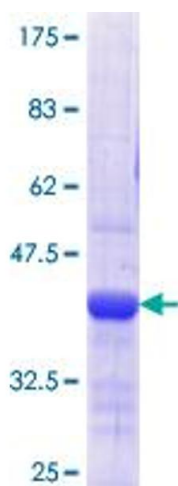


Image 1.