



[Go to Product page](#)

Datasheet for ABIN1349094

CECR5 Protein (AA 24-423) (GST tag)

1 Image

Overview

Quantity:	10 µg
Target:	CECR5
Protein Characteristics:	AA 24-423
Origin:	Human
Source:	Wheat germ
Protein Type:	Recombinant
Purification tag / Conjugate:	This CECR5 protein is labelled with GST tag.
Application:	ELISA, Western Blotting (WB), Antibody Array (AA), Affinity Purification (AP)

Product Details

Purpose:	CECR5 (Human) Recombinant Protein (P01)
Sequence:	AAGLQGRPAR RCYAVGPAQS PPTFGFLLDI DGVLVRGHRV IPAALKAFRR LVNSQGQLRV PVVFTNAGN ILQHSKAQEL SALLGCEVDA DQVILSHSPM KLFSEYHEKR MLVSGQGPVM ENAOGLGFRN VVTVDLRMA FPLLDMDVLE RRLKTTPLPR NDFPRIEGVL LLGEPVRWET SLQLIMDVLL SNGSPGAGLA TPPYPHLPVL ASNMDLLWMA EAKMPRFGHG TFLLCLETIY QKVTGKELRY EGLMGKPSIL TYQYAEDLIR RQAERRGWAA PIRKLYAVGD NPMSDVYGAN LFHQYLQKAT HDGAPELGAG GTRQQQPSAS QSCISILVCT GVYNPRNPQS TEPVLGGGEP PFHGHRLDCF SPGLMEASHV VNDVNEAVQL VFRKEGWALE
Characteristics:	Human CECR5 full-length ORF (AAH42540, 24 a.a. - 423 a.a.) recombinant protein with GST-tag at N-terminal.
Purification:	in vitro wheat germ expression system

Target Details

Target:	CECR5
Alternative Name:	CECR5 (CECR5 Products)
Background:	Full Gene Name: cat eye syndrome chromosome region, candidate 5 Synonyms:
Gene ID:	27440

Application Details

Application Notes:	Optimal working dilution should be determined by the investigator.
Comment:	Preparation method: in vitro, wheat germ expression system Product Quality tested by: 12.5% SDS-PAGE Stained with Coomassie Blue.
Restrictions:	For Research Use only

Handling

Buffer:	50 mM Tris-HCl, 10 mM reduced Glutathione, pH =8.0 in the elution buffer.
Handling Advice:	Aliquot to avoid repeated freezing and thawing.
Storage:	-80 °C
Storage Comment:	Best use within three months from the date of receipt of this protein.

Images

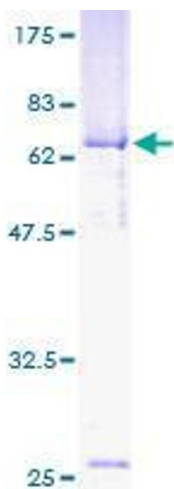


Image 1.