



[Go to Product page](#)

Datasheet for ABIN1349100  
**CELSR3 Protein (AA 71-180) (GST tag)**

1 Image

Overview

Quantity:	10 µg
Target:	CELSR3
Protein Characteristics:	AA 71-180
Origin:	Human
Source:	Wheat germ
Protein Type:	Recombinant
Purification tag / Conjugate:	This CELSR3 protein is labelled with GST tag.
Application:	Western Blotting (WB), ELISA, Antibody Array (AA), Affinity Purification (AP)

Product Details

Purpose:	CELSR3 (Human) Recombinant Protein (Q01)
Sequence:	REDGGPGLGV REPIFVGLRG RRQSARNSRG PPEQPNEELG IEHGVQPLGS RERETGQGPG SVLYWRPEVS SCGRTGPLQR GSLSPGALSS GVPGSGNSSP LPSDFLIRHH
Characteristics:	Human CELSR3 partial ORF ( NP_001398, 71 a.a. - 180 a.a.) recombinant protein with GST-tag at N-terminal.
Purification:	in vitro wheat germ expression system

Target Details

Target:	CELSR3
Alternative Name:	CELSR3 ( <a href="#">CELSR3 Products</a> )

## Target Details

---

Background: Full Gene Name: cadherin, EGF LAG seven-pass G-type receptor 3 (flamingo homolog, Drosophila)  
Synonyms: CDHF11,EGFL1,FMI1,HFMI1,MEGF2,RESDA1

---

Gene ID: 1951

---

NCBI Accession: [NM\\_001407](#)

---

## Application Details

---

Application Notes: Optimal working dilution should be determined by the investigator.

---

Comment: Preparation method: in vitro, wheat germ expression system  
Product Quality tested by: 12.5% SDS-PAGE Stained with Coomassie Blue.

---

Restrictions: For Research Use only

---

## Handling

---

Buffer: 50 mM Tris-HCl, 10 mM reduced Glutathione, pH =8.0 in the elution buffer.

---

Handling Advice: Aliquot to avoid repeated freezing and thawing.

---

Storage: -80 °C

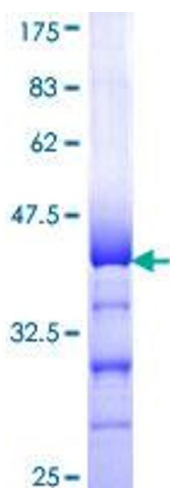
---

Storage Comment: Best use within three months from the date of receipt of this protein.

---

## Images

---



**Image 1.**