

Datasheet for ABIN1349105
CENPC1 Protein (AA 1-542) (GST tag)



[Go to Product page](#)

1 Image

Overview

Quantity:	25 µg
Target:	CENPC1
Protein Characteristics:	AA 1-542
Origin:	Human
Source:	Wheat germ
Protein Type:	Recombinant
Purification tag / Conjugate:	This CENPC1 protein is labelled with GST tag.
Application:	ELISA, Antibody Array (AA), Affinity Purification (AP), Western Blotting (WB)

Product Details

Purpose:	CENPC1 (Human) Recombinant Protein (P01)
Sequence:	MAASGLDHLK NGYRRRFCRP SRARDINTEQ GQNVLEILQD CFEEKSLAND FSTNSTKSVP NSTRKIKDTC IQSPSKECQK SHPKSVPVSS KKKEASLQFV VEPSEATNRS VQAHEVHQKI LATDVSSKNT PDSKISSRN INDHHSEADE EFYLSVGSPTS VLLDAKTSVS QNVIPSSAQK RETYTFENSV NMLPSSTEVS VKTKKRLNFD DKVMLKKIEI DNKVSDEEDK TSEGQERKPS GSSQNRIRDS EYEIQRQAKK SFSTLFLETV KRKSESSPIV RHAATAPPHS CPPDDTKLIE DEFIIDESDQ SFASRSWITI PRKAGSLKQR TISPAESTAL LQGRKSREKH HNILPKTLAN DKHSHKPHPV ETSQPSDKTV LDTSYALIGE TVNNYRSTKY EMYSKNAEKP SRSKRTIKQK QRRKFMAKPA EEQLDVGQSK DENIHTSHIT QDEFQRNSDR NMEEHEEMGN DCVSKKQMPP VGSKKSSTRK DKEESKKKRF SSESKNLVP EEVTSTVTKS RRISRRPSDW WVKSEESCL KC
Characteristics:	Human CENPC1 full-length ORF (AAH30695.1, 1 a.a. - 542 a.a.) recombinant protein with GST-tag at N-terminal.

Product Details

Purification: in vitro wheat germ expression system

Target Details

Target: CENPC1

Alternative Name: CENPC1 ([CENPC1 Products](#))

Background: Full Gene Name: centromere protein C 1
Synonyms: CENP-C,CENPC,MIF2,hcp-4

Gene ID: 1060

Application Details

Application Notes: Optimal working dilution should be determined by the investigator.

Comment: Preparation method: in vitro, wheat germ expression system
Product Quality tested by: 12.5% SDS-PAGE Stained with Coomassie Blue.

Restrictions: For Research Use only

Handling

Buffer: 50 mM Tris-HCl, 10 mM reduced Glutathione, pH =8.0 in the elution buffer.

Handling Advice: Aliquot to avoid repeated freezing and thawing.

Storage: -80 °C

Storage Comment: Best use within three months from the date of receipt of this protein.

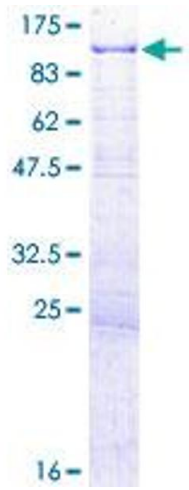


Image 1.