



[Go to Product page](#)

Datasheet for ABIN1349116

CENPJ Protein (AA 1-372) (GST tag)

1 Image

Overview

Quantity:	10 µg
Target:	CENPJ
Protein Characteristics:	AA 1-372
Origin:	Human
Source:	Wheat germ
Protein Type:	Recombinant
Purification tag / Conjugate:	This CENPJ protein is labelled with GST tag.
Application:	Western Blotting (WB), ELISA, Antibody Array (AA), Affinity Purification (AP)

Product Details

Purpose:	CENPJ (Human) Recombinant Protein (P01)
Sequence:	MRKLQKERKV FEKYTTAART FPDKKEREI QTLKQIADL REDLKRKETK WSSTHSRLRS QIQMLVRENT DLREEIKVME RFRLDAWKRA EAIESSLEVE KKDKLANTSV RFQNSQISSG TQVEKYKKNY LPMQGNPPRR SKSAPPRDLG NLDKGQAASP REPLEPLNFP DPEYKEEEEEED QDIQGEISHP DGKVEKVYKN GCRVILFPNG TRKEVSADGK TITVTFEFGD VKQVMPDQRV IYYAAAQTT HTTYPEGLEV LHFSSGQIEK HYPDGRKEIT FPDQTVKNLF PDGQEEISIFP DGTIVRVQRD GNKLIEFNNG QRELHTAQFK RREYPDGTVK TVYANGHQET KYRSGRIRVK DKEGNVLMDDT EL
Characteristics:	Human CENPJ full-length ORF (AAH24209.3, 1 a.a. - 372 a.a.) recombinant protein with GST-tag at N-terminal.
Purification:	in vitro wheat germ expression system

Target Details

Target:	CENPJ
Alternative Name:	CENPJ (CENPJ Products)
Background:	Full Gene Name: centromere protein J Synonyms: BM032,CPAP,LAP,LIP1,MCPH6,MGC131581,MGC131582,MGC142222,MGC142224
Gene ID:	55835
Pathways:	M Phase

Application Details

Application Notes:	Optimal working dilution should be determined by the investigator.
Comment:	Preparation method: in vitro, wheat germ expression system Product Quality tested by: 12.5% SDS-PAGE Stained with Coomassie Blue.
Restrictions:	For Research Use only

Handling

Buffer:	50 mM Tris-HCl, 10 mM reduced Glutathione, pH =8.0 in the elution buffer.
Handling Advice:	Aliquot to avoid repeated freezing and thawing.
Storage:	-80 °C
Storage Comment:	Best use within three months from the date of receipt of this protein.

Images

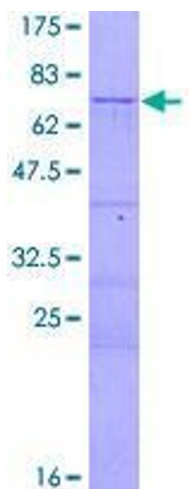


Image 1.