



[Go to Product page](#)

Datasheet for ABIN1349118

CENPJ Protein (AA 979-1088) (GST tag)

1 Image

Overview

Quantity:	10 µg
Target:	CENPJ
Protein Characteristics:	AA 979-1088
Origin:	Human
Source:	Wheat germ
Protein Type:	Recombinant
Purification tag / Conjugate:	This CENPJ protein is labelled with GST tag.
Application:	Western Blotting (WB), ELISA, Antibody Array (AA), Affinity Purification (AP)

Product Details

Purpose:	CENPJ (Human) Recombinant Protein (Q01)
Sequence:	KYTTAARTFP DKKEREEIQT LKQQIADLRE DLKRKETKWS STHSRLRSQI QMLVRENTDL REEIKVMERF RLDAAWKRAEA IESSLEVEKK DKLANTSVRF QNSQISSGTQ
Characteristics:	Human CENPJ partial ORF (NP_060921, 979 a.a. - 1088 a.a.) recombinant protein with GST-tag at N-terminal.
Purification:	in vitro wheat germ expression system

Target Details

Target:	CENPJ
Alternative Name:	CENPJ (CENPJ Products)

Target Details

Background:	Full Gene Name: centromere protein J Synonyms: BM032,CPAP,LAP,LIP1,MCPH6,MGC131581,MGC131582,MGC142222,MGC142224
Gene ID:	55835
NCBI Accession:	NM_018451
Pathways:	M Phase

Application Details

Application Notes:	Optimal working dilution should be determined by the investigator.
Comment:	Preparation method: in vitro, wheat germ expression system Product Quality tested by: 12.5% SDS-PAGE Stained with Coomassie Blue.
Restrictions:	For Research Use only

Handling

Buffer:	50 mM Tris-HCl, 10 mM reduced Glutathione, pH =8.0 in the elution buffer.
Handling Advice:	Aliquot to avoid repeated freezing and thawing.
Storage:	-80 °C
Storage Comment:	Best use within three months from the date of receipt of this protein.

Images

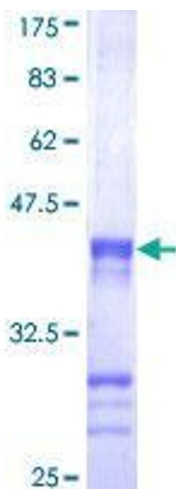


Image 1.