



[Go to Product page](#)

Datasheet for ABIN1349124

## CENPL Protein (AA 1-390) (GST tag)

### 1 Image

#### Overview

Quantity:	10 µg
Target:	CENPL
Protein Characteristics:	AA 1-390
Origin:	Human
Source:	Wheat germ
Protein Type:	Recombinant
Purification tag / Conjugate:	This CENPL protein is labelled with GST tag.
Application:	ELISA, Western Blotting (WB), Antibody Array (AA), Affinity Purification (AP)

#### Product Details

Purpose:	CENPL (Human) Recombinant Protein (P01)
Sequence:	MDSYSAPEST PSASSRPEDY FIGATPLQKR LESVRKQSSF ILTPRRKIP QCSQLQEDVD PQKVAFLH K QWTLYSLTPL YKFSYSNLKE YSRLNFAFIV AEKQKGLAVE VGEDFNIKVI FSTLLGMKGT QRDPEAFLVQ GLILSPRLEY SGTILVDCNL CLLGSSDPST LAFQVAGTAG ACHHTRIVSK SQLPSENREG KVLWTGWFFC VFGDSLLETV SEDFTCLPLF LANGAESNTA IIGTWFKTF DCYFSPLAIN AFNLSWMAAM WTACKMDHYV ATTEFLWSVP CSPQSLDISF AIHPEDAKAL WDSVHKTPGE VTQEEVDLFM DCLYSHFHRH FKIHLSATRL VRVSTSVASA HTDGKIKILC HKYLIGVLAY LTELAIHQIE
Characteristics:	Human CENPL full-length ORF ( AAH33154.1, 1 a.a. - 390 a.a.) recombinant protein with GST-tag at N-terminal.
Purification:	in vitro wheat germ expression system

## Target Details

Target:	CENPL
Alternative Name:	CENPL
Background:	Full Gene Name: centromere protein L Synonyms: C1orf155,CENP-L,FLJ31044,FLJ31786,RP3-383J4.1,dJ383J4.3
Gene ID:	91687

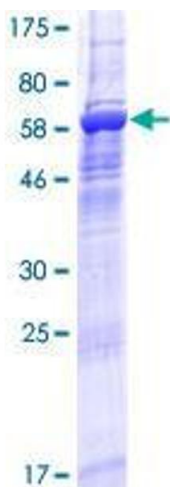
## Application Details

Application Notes:	Optimal working dilution should be determined by the investigator.
Comment:	Preparation method: in vitro, wheat germ expression system Product Quality tested by: 12.5% SDS-PAGE Stained with Coomassie Blue.
Restrictions:	For Research Use only

## Handling

Buffer:	50 mM Tris-HCl, 10 mM reduced Glutathione, pH =8.0 in the elution buffer.
Handling Advice:	Aliquot to avoid repeated freezing and thawing.
Storage:	-80 °C
Storage Comment:	Best use within three months from the date of receipt of this protein.

## Images



**Image 1.**