



[Go to Product page](#)

Datasheet for ABIN1349135
CENPQ Protein (GST tag)

1 Image

Overview

Quantity:	10 µg
Target:	CENPQ
Origin:	Human
Source:	Wheat germ
Protein Type:	Recombinant
Purification tag / Conjugate:	This CENPQ protein is labelled with GST tag.
Application:	ELISA, Western Blotting (WB), Affinity Purification (AP), Antibody Array (AA)

Product Details

Purpose:	C6orf139 (Human) Recombinant Protein (P01)
Sequence:	MSGKANASKK NAQQLKRNP KKKDNEEVVL SENKVRNTVK KNKNHLKDLS SEGQTKHTNL KHGKTAASKR KTWQPLSKST RDHLQTMMS VIMTILSNSI KEKEEIQYHL NFLKKRLLQQ CETLKVPPKK MEDLTNVSSL LNMERARDKA NEEGLALLQE EIDKMVETTE LMTGNIQSLK NKIQILASEV EEEEEERVKQM HQINSSGVLS LPELSQKTLK APTLQKEILA LIPNQNALLK DL DILHNSSQ MKSMSTFIEE AYKCLDAS
Characteristics:	Human C6orf139 full-length ORF (AAH16279.2, 1 a.a. - 268 a.a.) recombinant protein with GST-tag at N-terminal.
Purification:	in vitro wheat germ expression system

Target Details

Target:	CENPQ
---------	-------

Target Details

Alternative Name:	CENPQ (CENPQ Products)
Background:	Gene: centromere protein Q Synonyms: C6orf139, CENP-Q, FLJ10545
Gene ID:	55166

Application Details

Application Notes:	Optimal working dilution should be determined by the investigator.
Restrictions:	For Research Use only

Handling

Buffer:	50 mM Tris-HCl, 10 mM reduced Glutathione, pH =8.0 in the elution buffer.
Handling Advice:	Aliquot to avoid repeated freezing and thawing.
Storage:	-80 °C
Storage Comment:	Best use within three months from the date of receipt of this protein.

Images

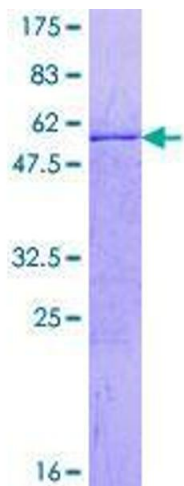


Image 1.