



[Go to Product page](#)

Datasheet for ABIN1349138

CENPV Protein (AA 173-272) (GST tag)

1 Image

Overview

Quantity:	10 µg
Target:	CENPV
Protein Characteristics:	AA 173-272
Origin:	Human
Source:	Wheat germ
Protein Type:	Recombinant
Purification tag / Conjugate:	This CENPV protein is labelled with GST tag.
Application:	ELISA, Western Blotting (WB), Antibody Array (AA), Affinity Purification (AP)

Product Details

Purpose:	PRR6 (Human) Recombinant Protein (Q01)
Sequence:	ICKKKQNRHF IVPASRFKLL KGAEHITTYT FNTHKAQHTF CKRCGVQSFY TPRSNDGGFG IAPHCLDEGT VRSMVTEEFN GSDWEKAMKE HKTIKNMSKE
Characteristics:	Human PRR6 partial ORF (NP_859067.2, 173 a.a. - 272 a.a.) recombinant protein with GST-tag at N-terminal.
Purification:	in vitro wheat germ expression system

Target Details

Target:	CENPV
Alternative Name:	CENPV (CENPV Products)

Target Details

Background:	Gene: centromere protein V Synonyms: 3110013H01Rik, CENP-V, PRR6, p30
Gene ID:	201161
NCBI Accession:	NM_181716

Application Details

Application Notes:	Optimal working dilution should be determined by the investigator.
Restrictions:	For Research Use only

Handling

Buffer:	50 mM Tris-HCl, 10 mM reduced Glutathione, pH =8.0 in the elution buffer.
Handling Advice:	Aliquot to avoid repeated freezing and thawing.
Storage:	-80 °C
Storage Comment:	Best use within three months from the date of receipt of this protein.

Images

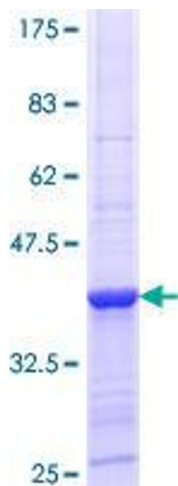


Image 1.