



[Go to Product page](#)

Datasheet for ABIN1349144

CEP250 Protein (AA 141-240) (GST tag)

1 Image

Overview

Quantity:	10 µg
Target:	CEP250
Protein Characteristics:	AA 141-240
Origin:	Human
Source:	Wheat germ
Protein Type:	Recombinant
Purification tag / Conjugate:	This CEP250 protein is labelled with GST tag.
Application:	Antibody Array (AA), Affinity Purification (AP), ELISA, Western Blotting (WB)

Product Details

Purpose:	CEP2 (Human) Recombinant Protein (Q01)
Sequence:	LTVDWSRARD ELMRKESQWQ MEQEFFKGYL KGEHGRLLSL WREVVTFRRH FLEMKSATDR DLMELKAEHV RLSGSLTCC LRLTVGAQSR EPNGSGRMDG
Characteristics:	Human CEP2 partial ORF (AAH01433, 141 a.a. - 240 a.a.) recombinant protein with GST-tag at N-terminal.
Purification:	in vitro wheat germ expression system

Target Details

Target:	CEP250
Alternative Name:	CEP250 (CEP250 Products)

Target Details

Background:	Full Gene Name: centrosomal protein 250 kDa Synonyms: C-NAP1, CEP2, CNAP1, MGC88542
Gene ID:	11190
Pathways:	M Phase , SARS-CoV-2 Protein Interactome

Application Details

Application Notes:	Optimal working dilution should be determined by the investigator.
Comment:	Preparation method: in vitro, wheat germ expression system Product Quality tested by: 12.5% SDS-PAGE Stained with Coomassie Blue.
Restrictions:	For Research Use only

Handling

Buffer:	50 mM Tris-HCl, 10 mM reduced Glutathione, pH =8.0 in the elution buffer.
Handling Advice:	Aliquot to avoid repeated freezing and thawing.
Storage:	-80 °C
Storage Comment:	Best use within three months from the date of receipt of this protein.

Images

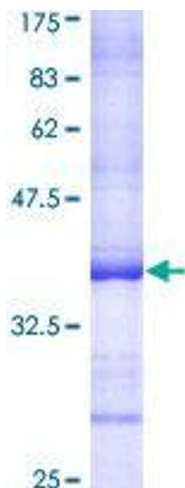


Image 1.