



[Go to Product page](#)

Datasheet for ABIN1349164

CER1 Protein (AA 1-267) (GST tag)

1 Image

Overview

Quantity:	10 µg
Target:	CER1
Protein Characteristics:	AA 1-267
Origin:	Human
Source:	Wheat germ
Protein Type:	Recombinant
Purification tag / Conjugate:	This CER1 protein is labelled with GST tag.
Application:	Western Blotting (WB), ELISA, Antibody Array (AA), Affinity Purification (AP)

Product Details

Purpose:	CER1 (Human) Recombinant Protein (P01)
Sequence:	MHLLLFQLLV LLPLGKTTRH QDGRQNQSSL SPVLLPRNQR ELPTGNHEEA EEKPDFVAV PHLVGTSPAG EGQRQREKML SRFGRFWKKP EREMHP SRDS DSEPFPPGTQ SLIQPIDGMK MEKSPLREEA KKFVHHFMFR KTPASQGVIL PIKSHEVHWE TCRTVPFSQT ITHEGCEKVV VQNNLCFGKC GSVHFPGAAQ HSHTSCSHCL PAKFTTMHLP LNCTELSSVI KVMMLVEECQ CKVKTEHEDG HILHAGSQDS FIPGVSA
Characteristics:	Human CER1 full-length ORF (AAH69491.1, 1 a.a. - 267 a.a.) recombinant protein with GST-tag at N-terminal.
Purification:	in vitro wheat germ expression system

Target Details

Target:	CER1
Alternative Name:	CER1 (CER1 Products)
Background:	Full Gene Name: cerberus 1, cysteine knot superfamily, homolog (Xenopus laevis) Synonyms: DAND4,MGC119894,MGC119895,MGC96951
Gene ID:	9350
Pathways:	Maintenance of Protein Location

Application Details

Application Notes:	Optimal working dilution should be determined by the investigator.
Comment:	Preparation method: in vitro, wheat germ expression system Product Quality tested by: 12.5% SDS-PAGE Stained with Coomassie Blue.
Restrictions:	For Research Use only

Handling

Buffer:	50 mM Tris-HCl, 10 mM reduced Glutathione, pH =8.0 in the elution buffer.
Handling Advice:	Aliquot to avoid repeated freezing and thawing.
Storage:	-80 °C
Storage Comment:	Best use within three months from the date of receipt of this protein.

Images

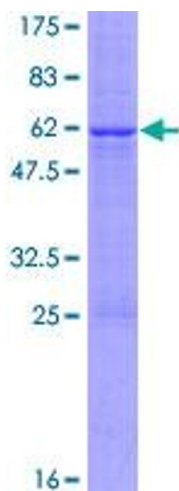


Image 1.